

# PALAWAN at a glance



*Palawan Council for Sustainable Development*





## **PALAWAN by the numbers:**

- **1,700 islands (more or less)**
- **~1.5 million hectares**
- **755,412 inhabitants**
- **~ 3.6% growth rate**
- **23 municipalities, 1 city**





# SOUTH PALAWAN

Land Area:

610,011 hectares

Population:

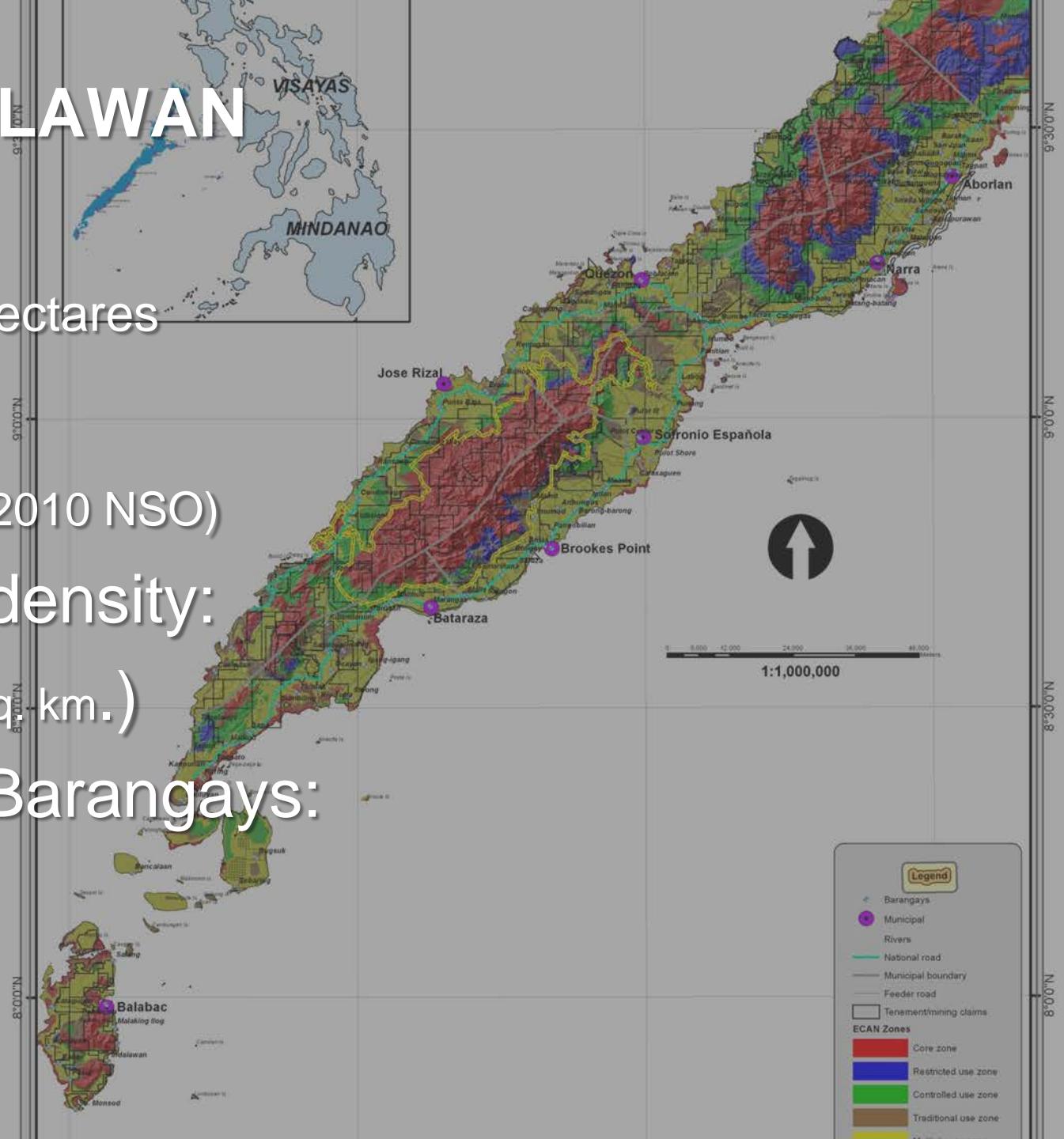
386,074 (2010 NSO)

Population density:

63 (person/sq. km.)

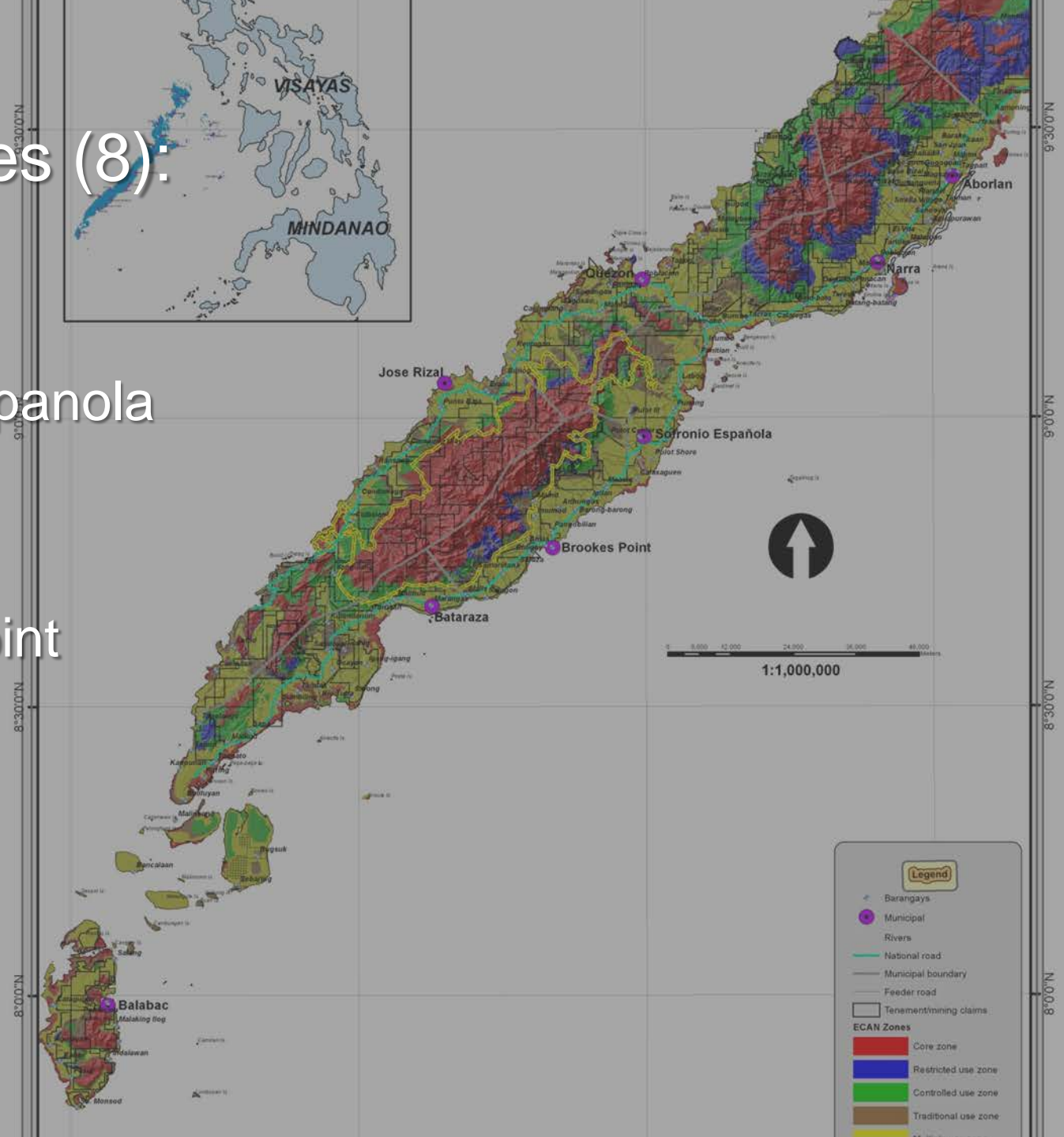
Number of Barangays:

136



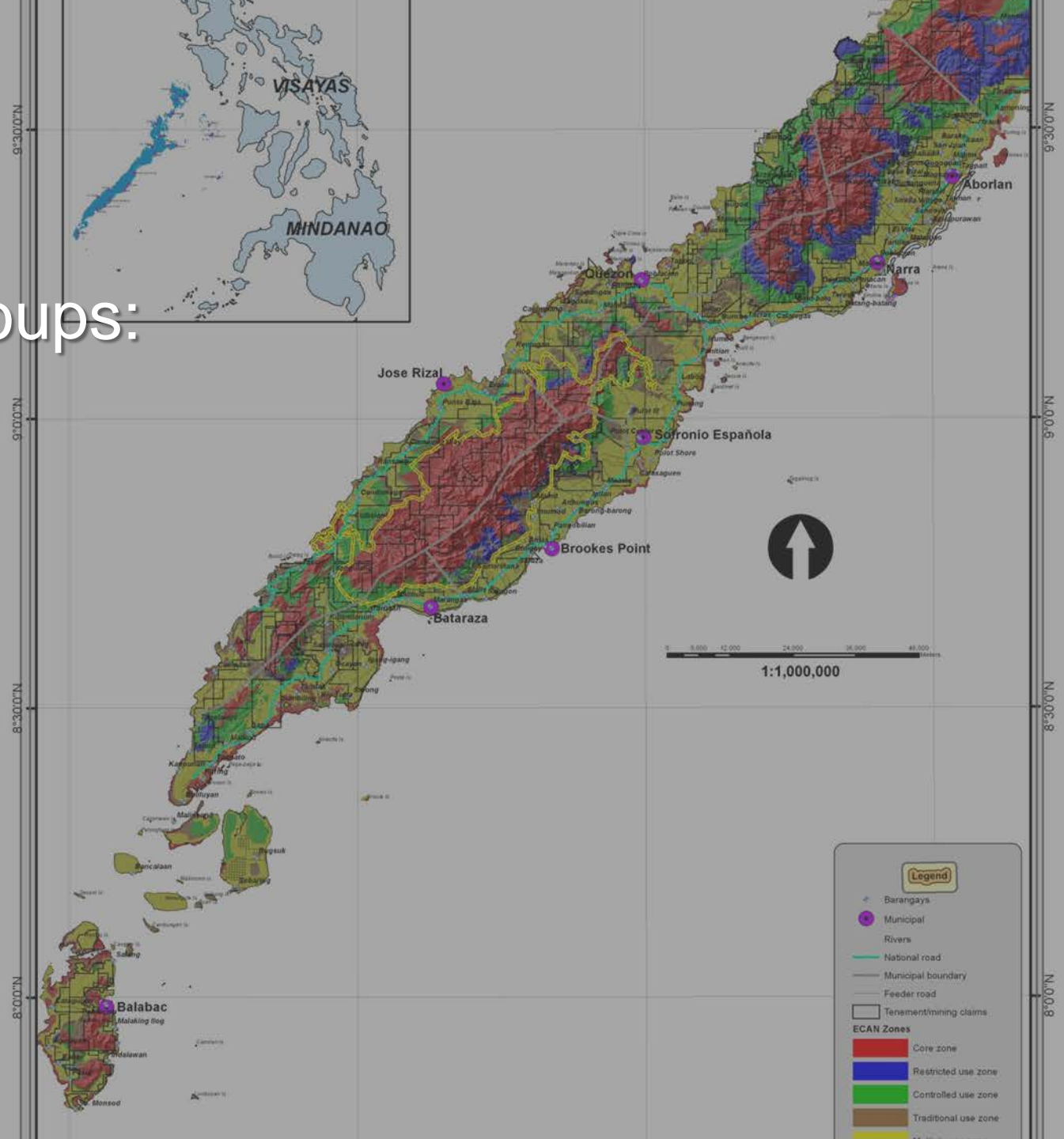
# Municipalities (8):

- Aborlan
- Narra
- Sofronio Espanola
- Quezon
- Rizal
- Brooke's Point
- Bataraza
- Balabac

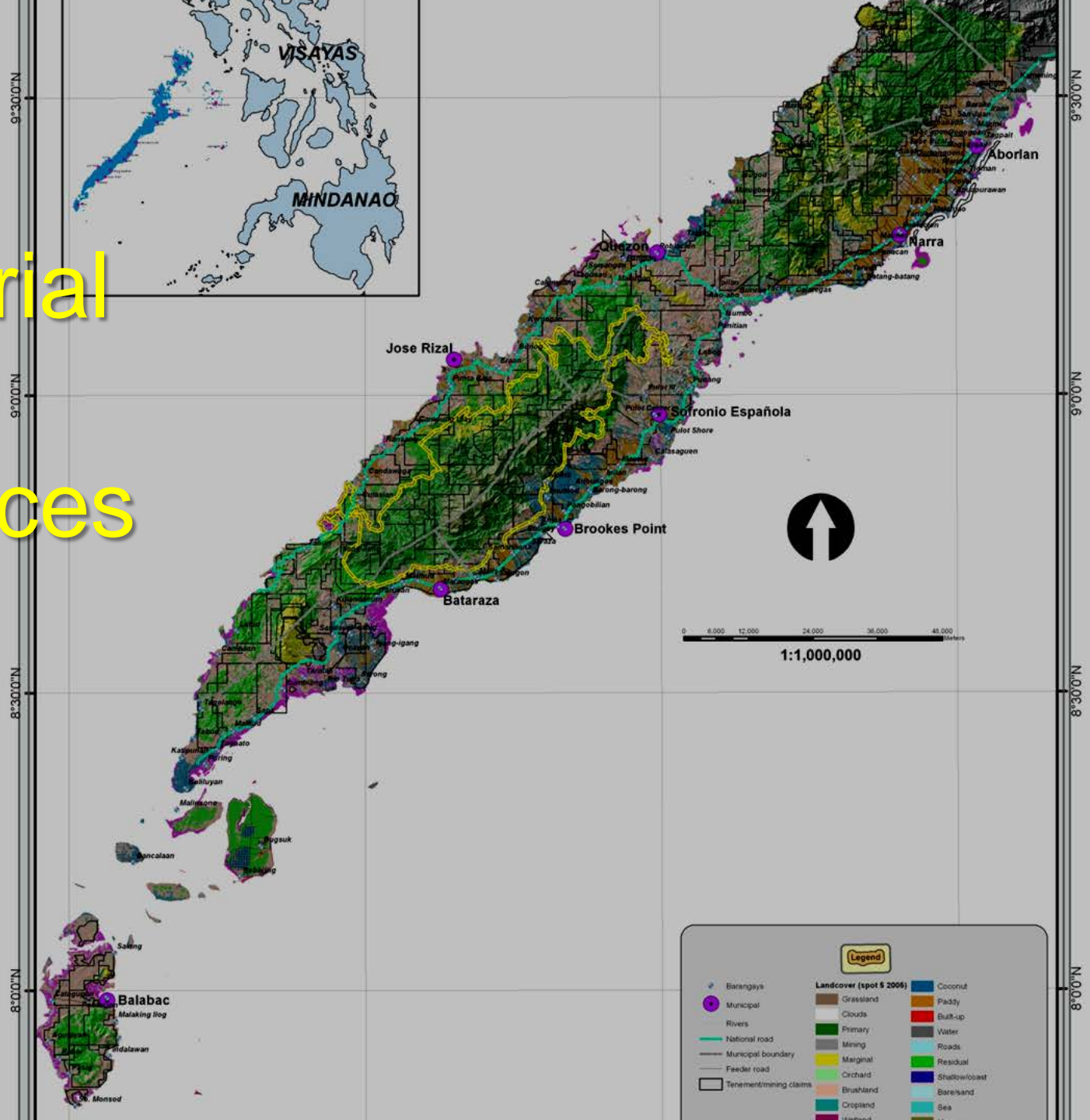


# Major IP groups:

- Tagbanua
- Batak
- Pala'wan
- Molbog







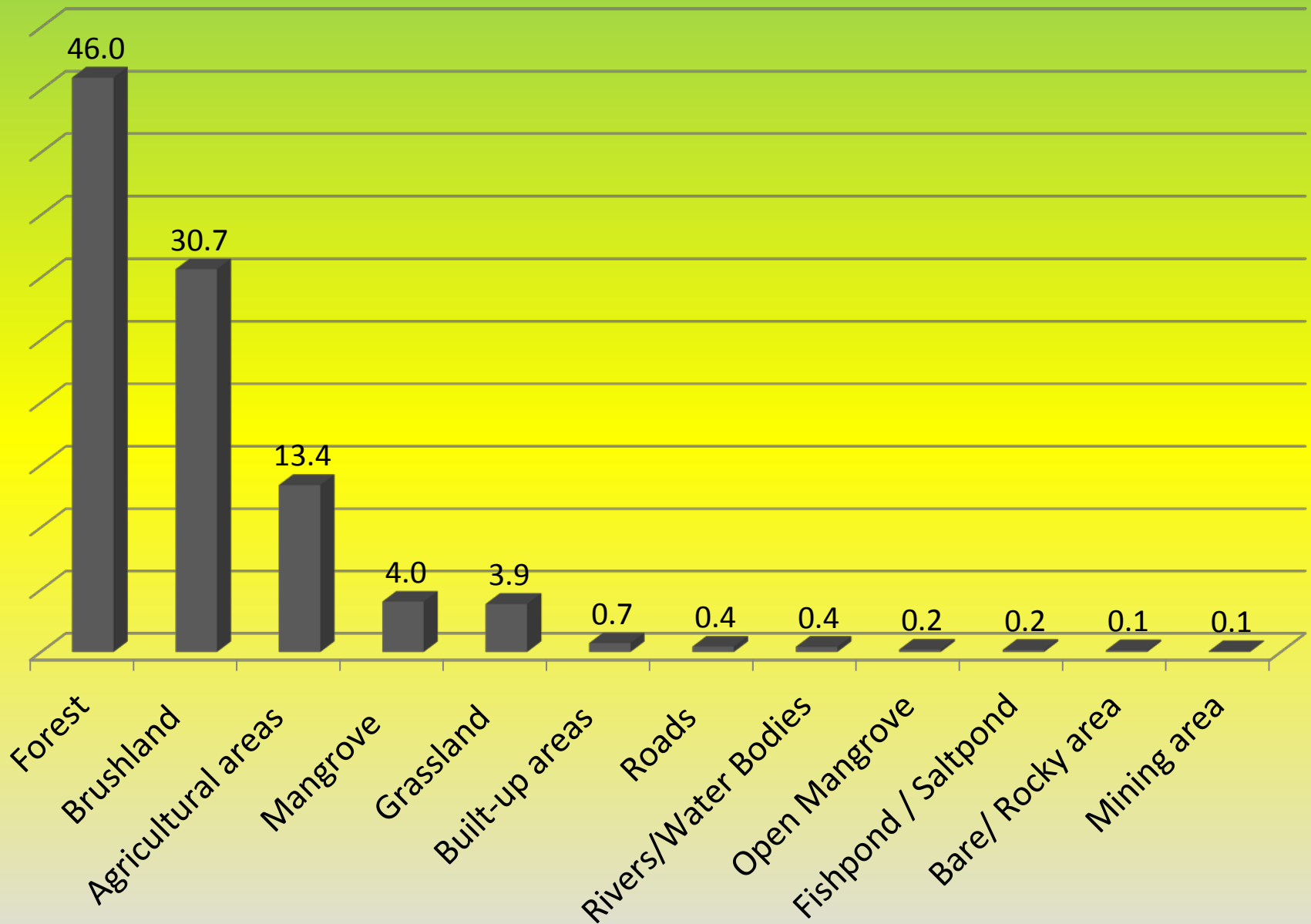
- large portion -> indigenous vegetation, rainforest, mangroves, and coastal ecosystem
- variety of endemic wildlife

### Topography:

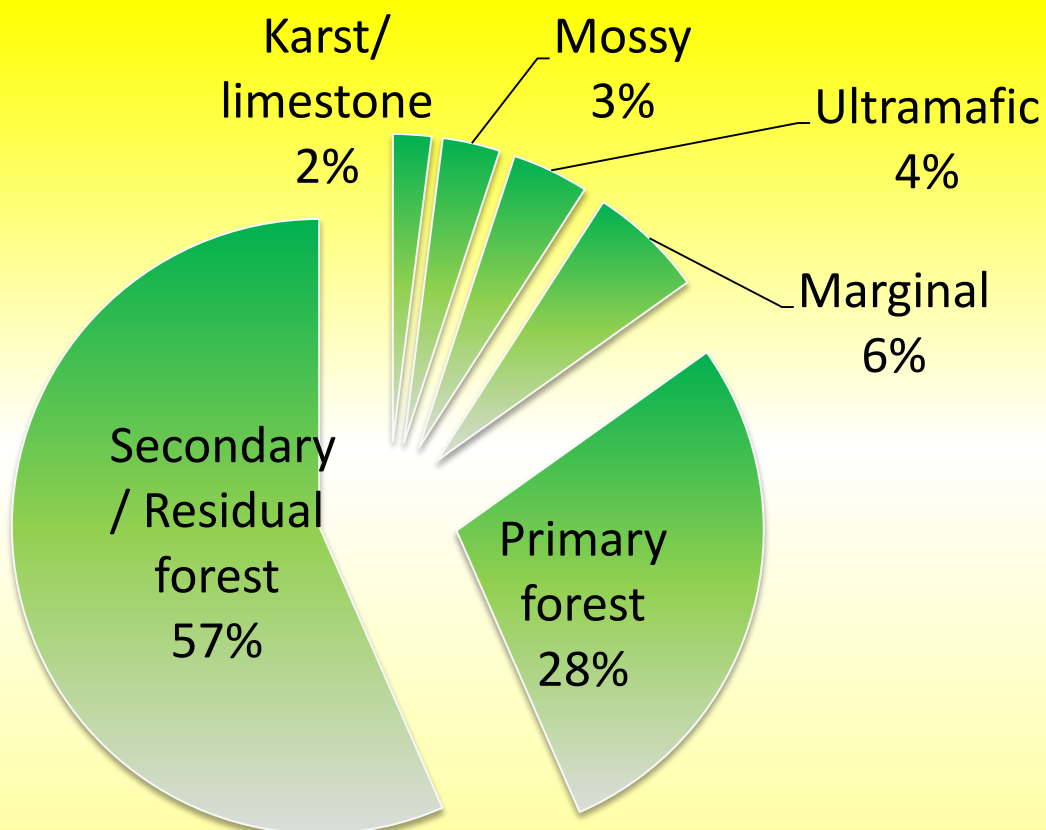
- rolling areas with high mountain ranges
- coastal municipalities with generally flat areas to rolling and irregular coastline
- numerous coves, bays, inlets
- lots of islands



Percentage Land Cover by Category, Palawan, 2005



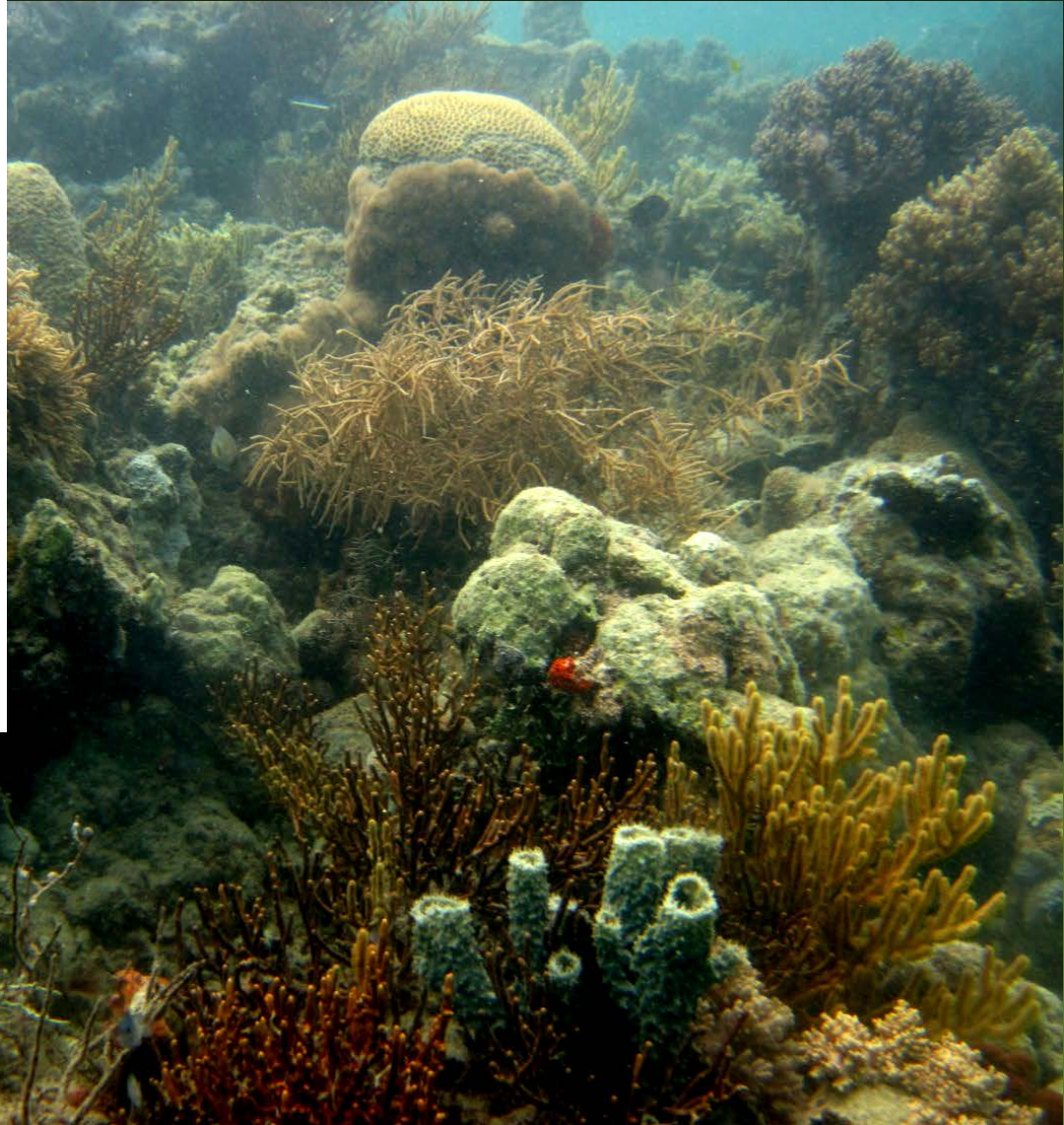
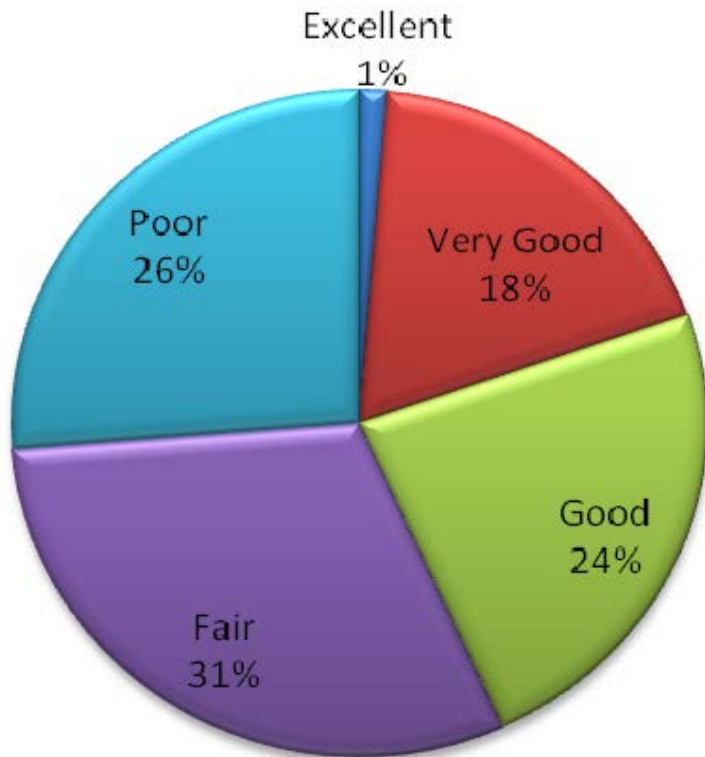




**Forest Cover Type, Palawan, 2005**



# Coral reef condition, 2013





## Climate:

- generally typhoon-free
- away from any major earthquake lines.

## 2 types of climate:

- dry (during November to April) and wet seasons each for 6 months





# Livelihood

- Employment rate:

Aborlan- 93%

Narra- 89%

Sofronio Espanola-85%

Quezon – 98%

Rizal – 90%

Brookes Point – 86%

Bataraza – 92%

Balabac – 60%



## Economic Activities:

- > Agriculture: rice (palay), coconut, corn, banana, vegetables, & fruits
- Fisheries: live reef fish
- Natural resources: forest products, wildlife,
- Minerals (nickel, chromite, silica, cobalt, etc)



# Policy issues concerning Southern Palawan follows.

## Thank you.

