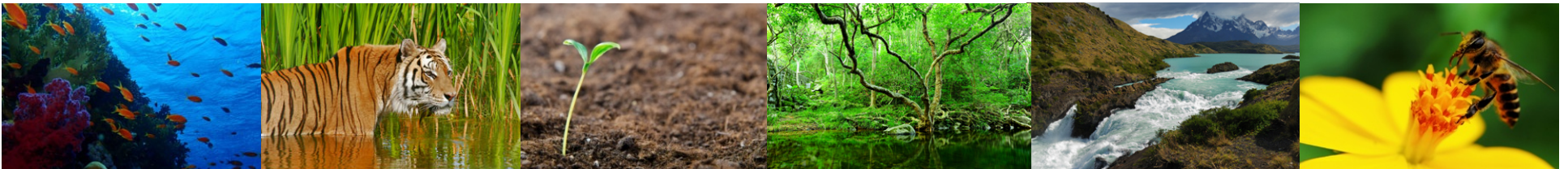


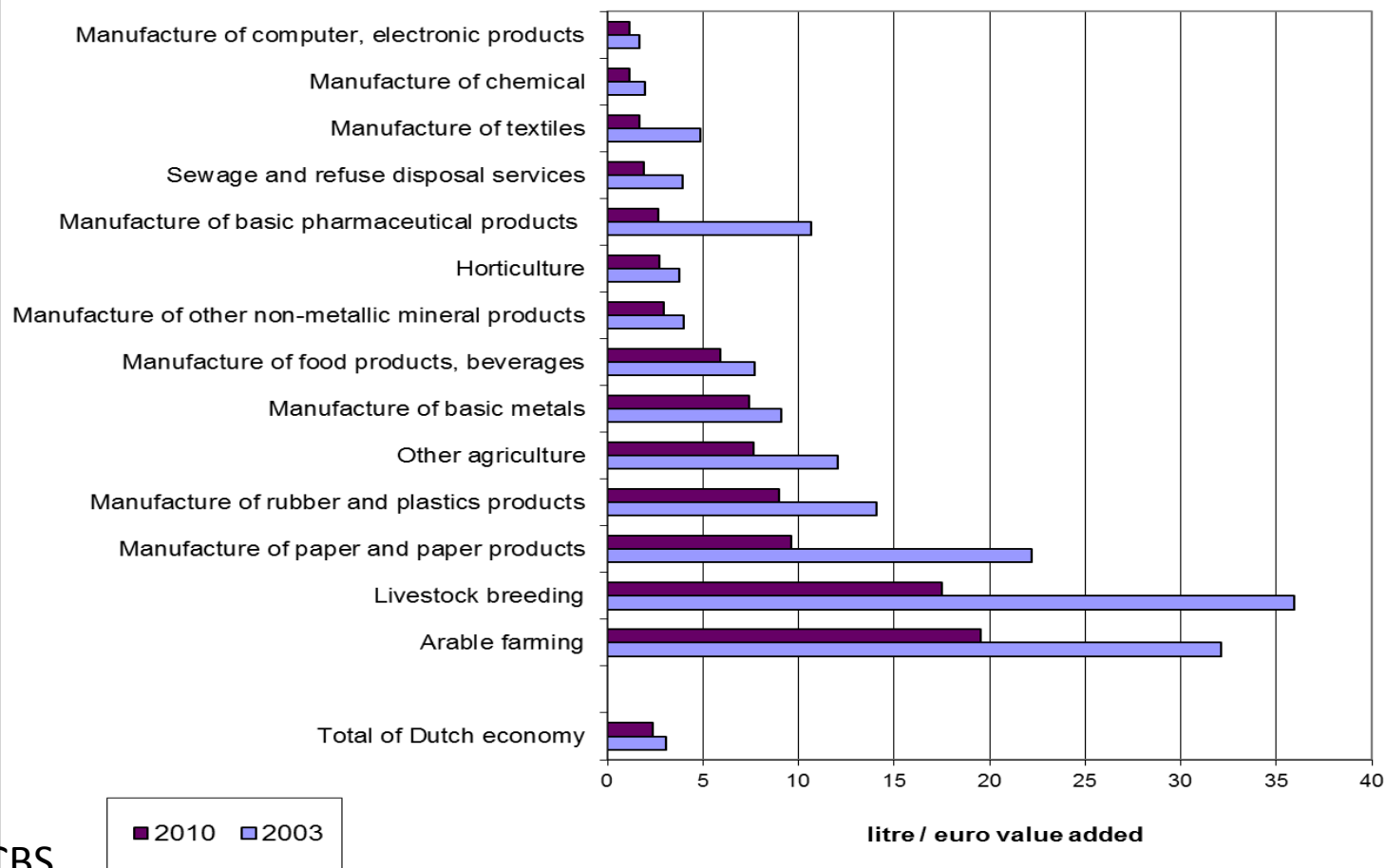
# Policy Applications of NCA

**Urvashi Narain, Senior Environmental Economist  
Agriculture and Environmental Services Department, The World Bank  
Istanbul, June 29, 2014**



# NETHERLANDS

## Water Profiles: What are the most important users of water? Is their water productivity improving between 2003 and 2010? (liter/ euro of sector value-added)



Source: CBS

# Murray-Darling River Basin Australia

## Benefits from Water Pricing Refor

Based on historical water use & price data, simulated *impact on GDP of doubling water prices* and the expected increases in water

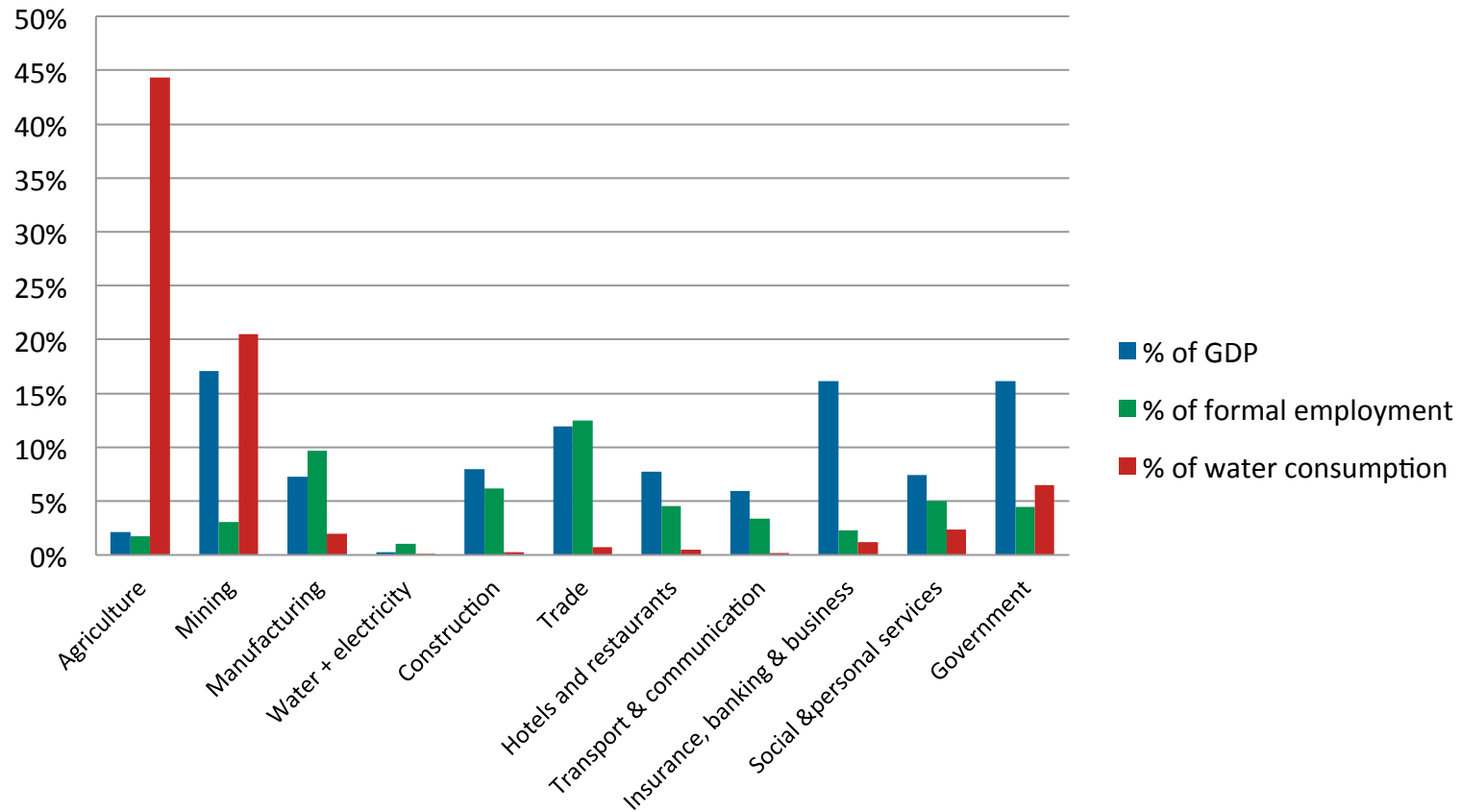
use efficiency (WUE) of 1-2%

	Increase in GDP, A\$million	
	1% increase WUE	2% increase WUE
Irrigated agriculture	-24	78
Dryland agriculture	-51	-112
Food and fibre processing	44	97
Other industries	262	410
<b>Total impact on GDP</b>	<b>253</b>	<b>521</b>

# BOTSWANA

## Are scarce water resources allocated efficiently?

% share in GDP, employment & water use, 2011



Source: DWA

Thank you!

[www.wavespartnership.org](http://www.wavespartnership.org)

