

# 2<sup>ND</sup> FORUM ON NATURAL CAPITAL ACCOUNTING FOR BETTER POLICY

22-23 November 2017, The Hague

## Session 6: NCA FOR Government Processes

By: Edwin M. Itshekeng, Botswana  
Ministry of Finance & Economic Development

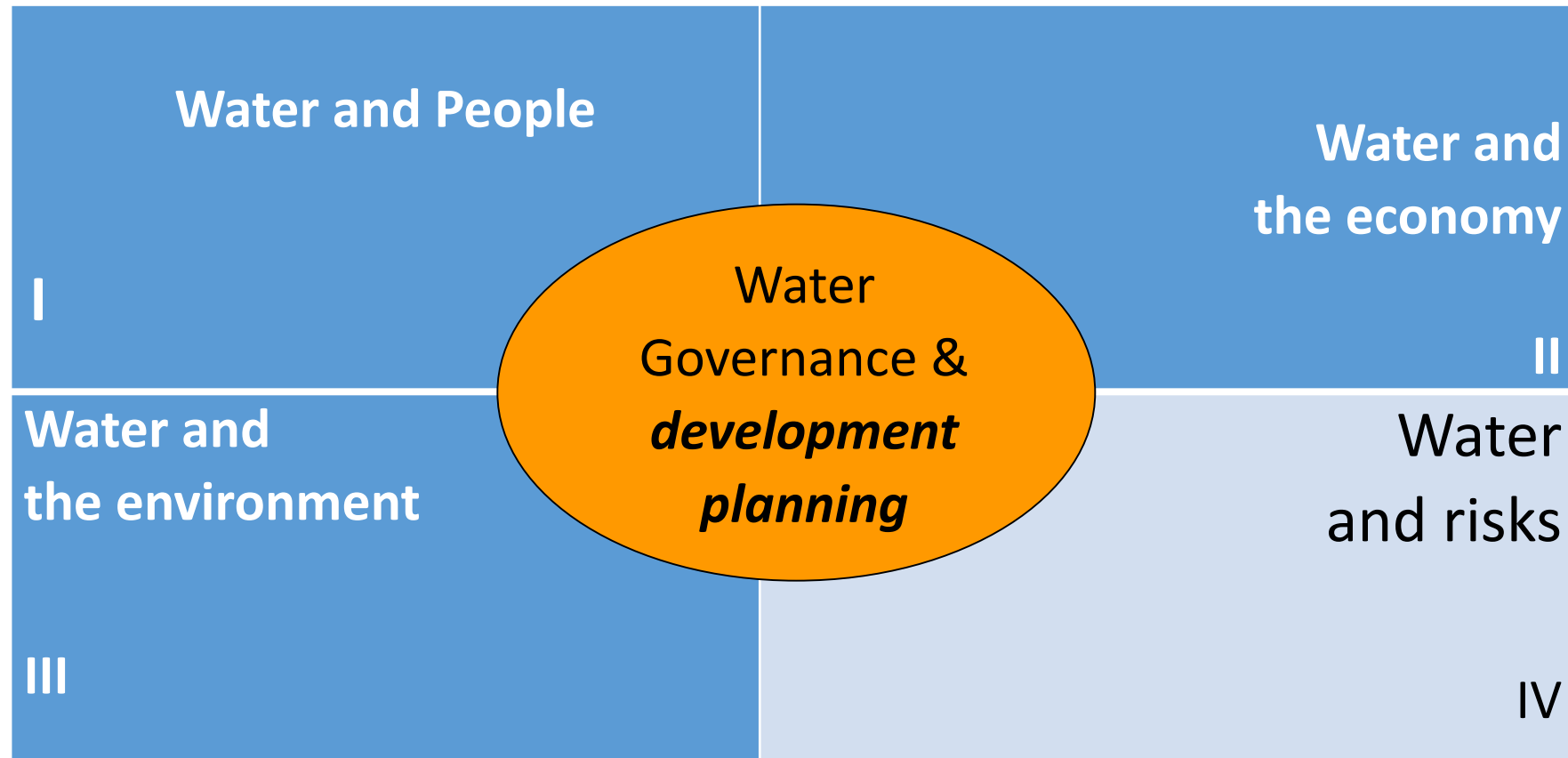
# Overview of NCA in Botswana

- Botswana is a drought-prone country, and water scarcity poses developmental challenges.
- The country embraced NCA following the outcome of the Gaborone Declaration for Sustainability in Africa (GDSA) in 2012. NCA prioritized for: **water**, minerals and energy resources, including compilation of macroeconomic indicators of sustainability.
- Capacity building and a process to institutionalize the accounts was led by Government, with support from the World Bank, through the WAVES Global Partnership programme.

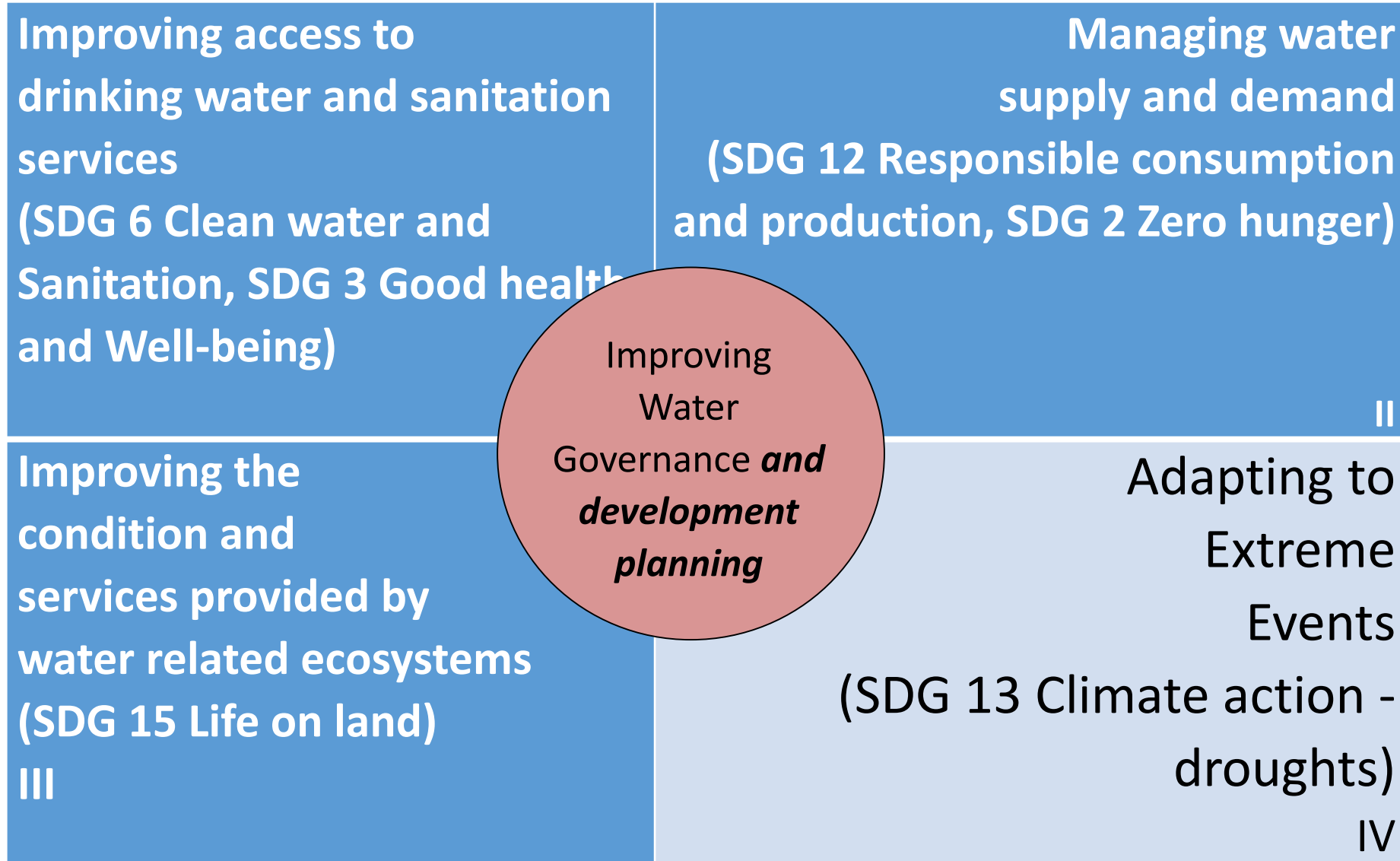
## ☐ **Achievements:**

- Water Accounts – 4 (annual) technical reports produced, covering 2011/12 – 2015/16
- Mineral Accounts – 1 report, 2016
- Energy Accounts – 1 report, 2016
- Macroeconomic Indicators of Sustainability: 2 reports, 2017
- For details about the reports, log on to : [www.wavespartnership.org](http://www.wavespartnership.org) @ resource centre

# Water and Sustainable Development



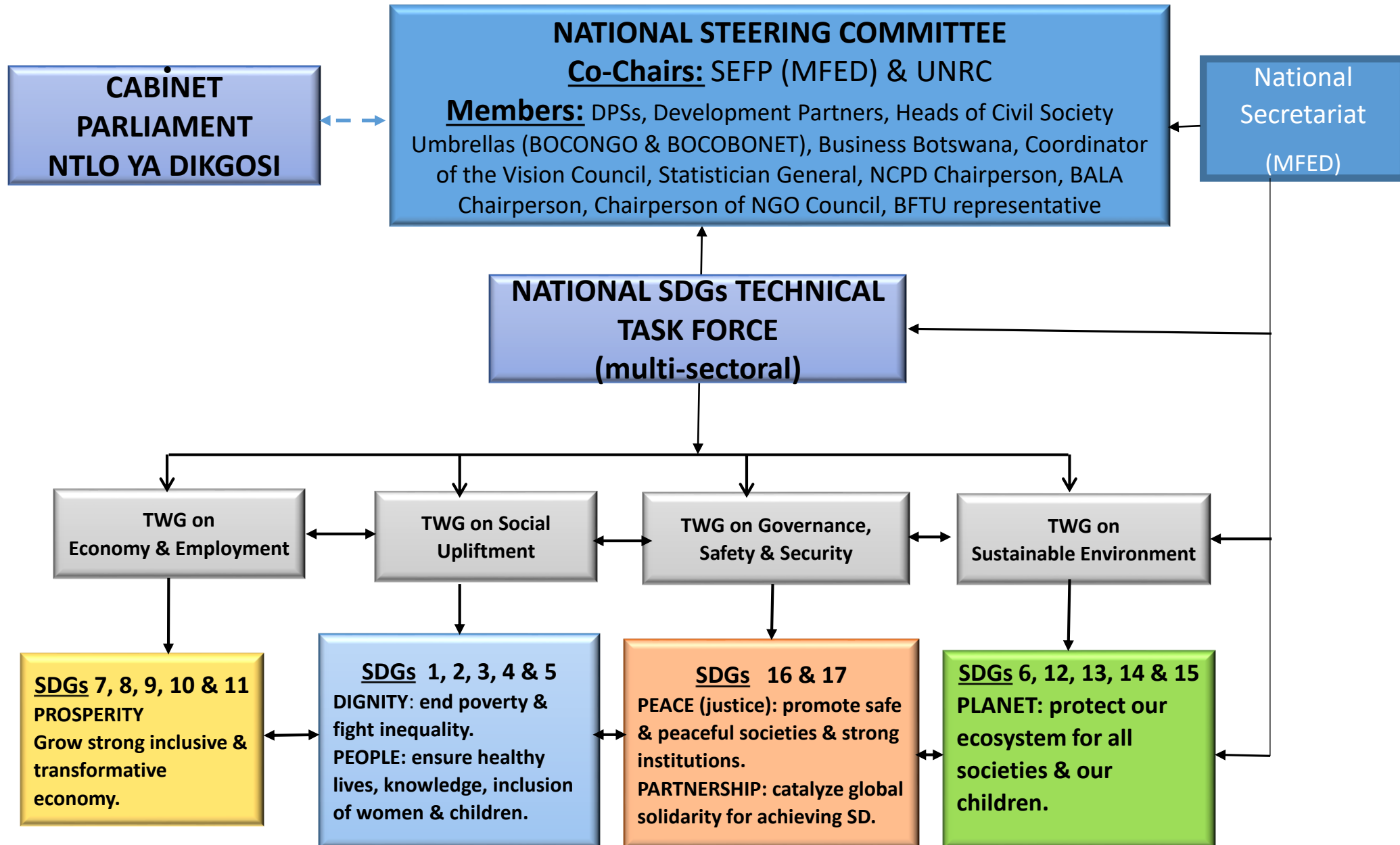
# Broad grouping of water policy goals and SDGs



# Key policy indicators derived from Water Accounts

Policy Goal	Indicator	Water Accounts reports produced				NCA links to National, Sectoral Policy Frameworks & SDGs
		2011-12	2013 - 14	2014-15	2015-16 (Draft)	
Improving access to drinking water and sanitation services	The amount of water supplied by utilities/self providers.	X	X	X	X	<ul style="list-style-type: none"> <li>Vision 2036</li> <li>NDP 11 thru National Performance Framework (TWGs-indicators)</li> <li>Ministerial subsidiary indicators (based on projects/programmes)</li> <li><b>SDG 6</b></li> </ul>
	The proportion of water supplied that is used by households	X	X	X	X	
	% of the population with access to improved sanitation	Census				
Managing water supply and demand	The proportion of total abstractions used by different economic sectors.	X	X	X	X	
	The amount of wastewater generated, the proportion that is treated, and the proportion that is reused					
	<i>Level of water stress: Fresh water withdrawal as % of fresh water resource</i>					

# SDGs INSTITUTIONAL STRUCTURE



# Concluding remark

- It is important that past successes should not lead to complacency

**Even if you are on the  
right track, you'll get  
run over if you just sit  
there**



THANK YOU!