



# GUATEMALA

## Development of NCA from outside to inside government

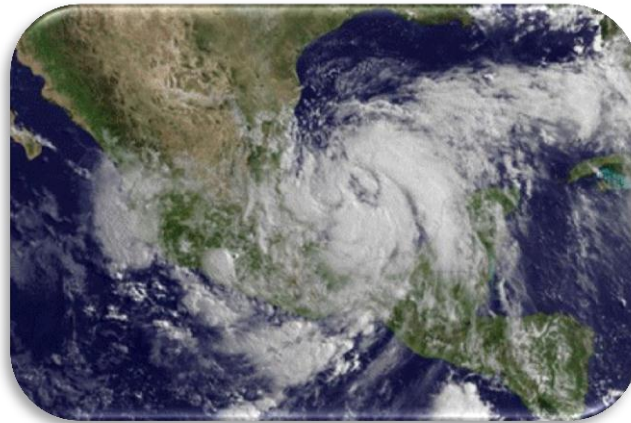


Ministerio de Finanzas Públicas

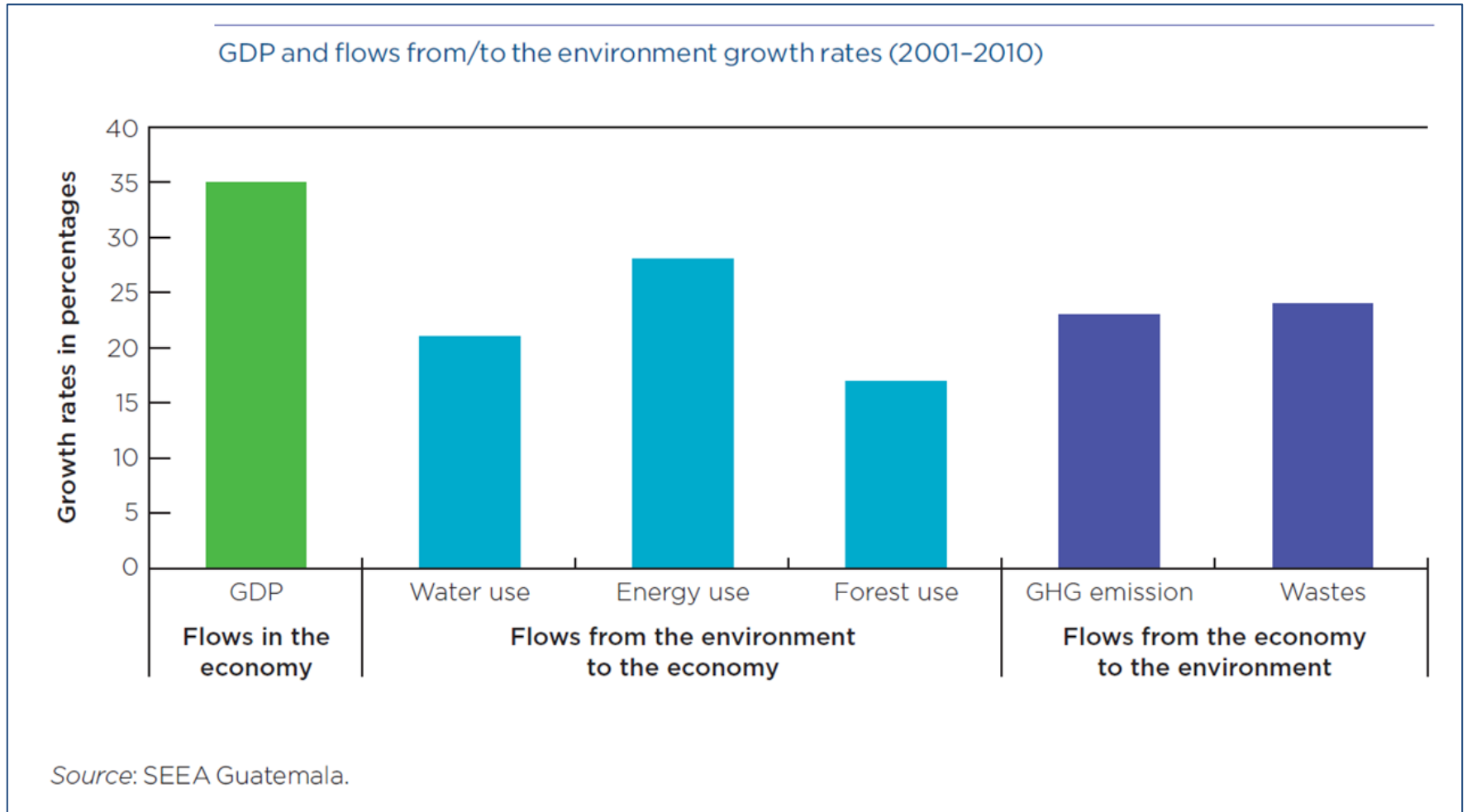


# The Natural Capital context in Guatemala

- According to the 2017 Global Climate Risk Index, Guatemala is one of the 10 countries most affected by extreme weather events which are related to climate change.
- In recent years, the country has been frequently affected by tropical storms, floods and landslides.



# The Natural Capital context in Guatemala



---

---

# The System of Environmental-Economic Accounting (SEEA) in Guatemala 2001-2010

- It provides a detailed description of the economy-environment relationships. It shows the impacts of the economy on the environment and the contribution of the environment to the economy.
- It allows to:
  - Value the natural capital and know its real contribution to the national economy.
  - Identify and analyze the actors, patterns, intensity and level of sustainability of natural capital use.
  - Provide the basis for the design and improvement of integrated economic and environmental policies.

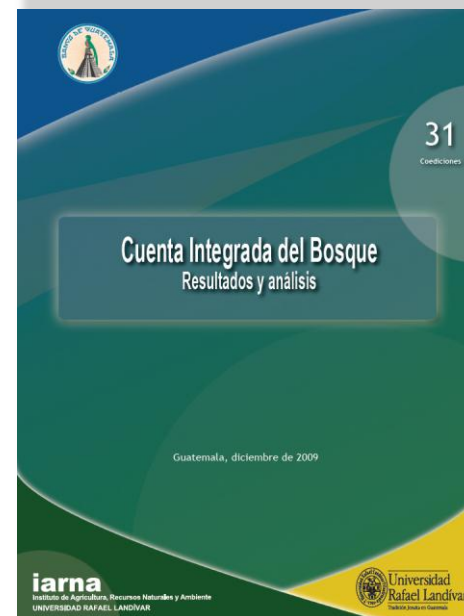
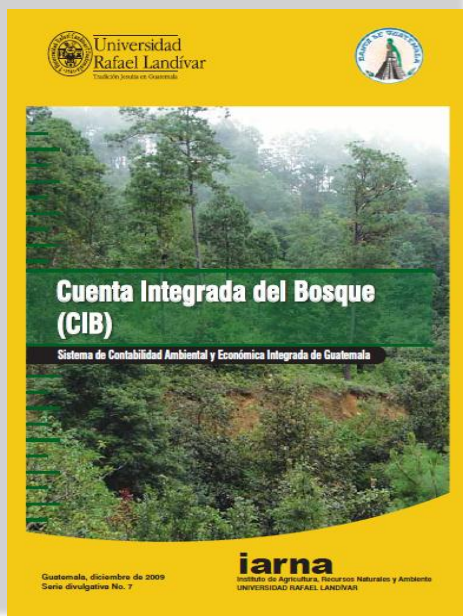
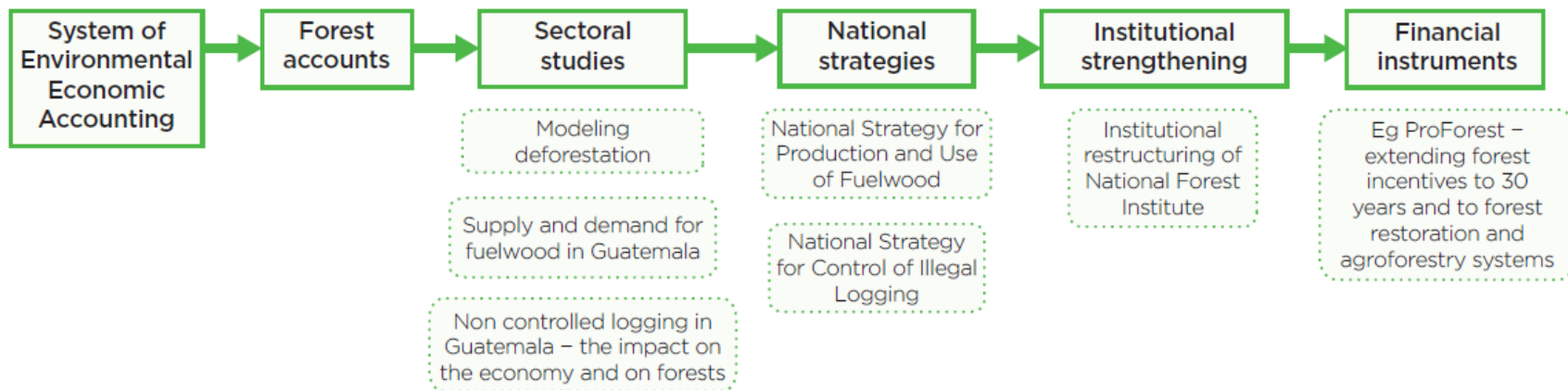
# NCA Implementation in Guatemala

- The construction of the accounting system was carried out thanks to a **public-academic partnership** that provided resources, credibility, stability, and projection to the process.
- There are seven integrated accounts:
  - Forest
  - Water resources
  - Underground resources
  - Energy and emissions
  - Land and ecosystems
  - Fishery and Aquaculture Resources
  - Waste

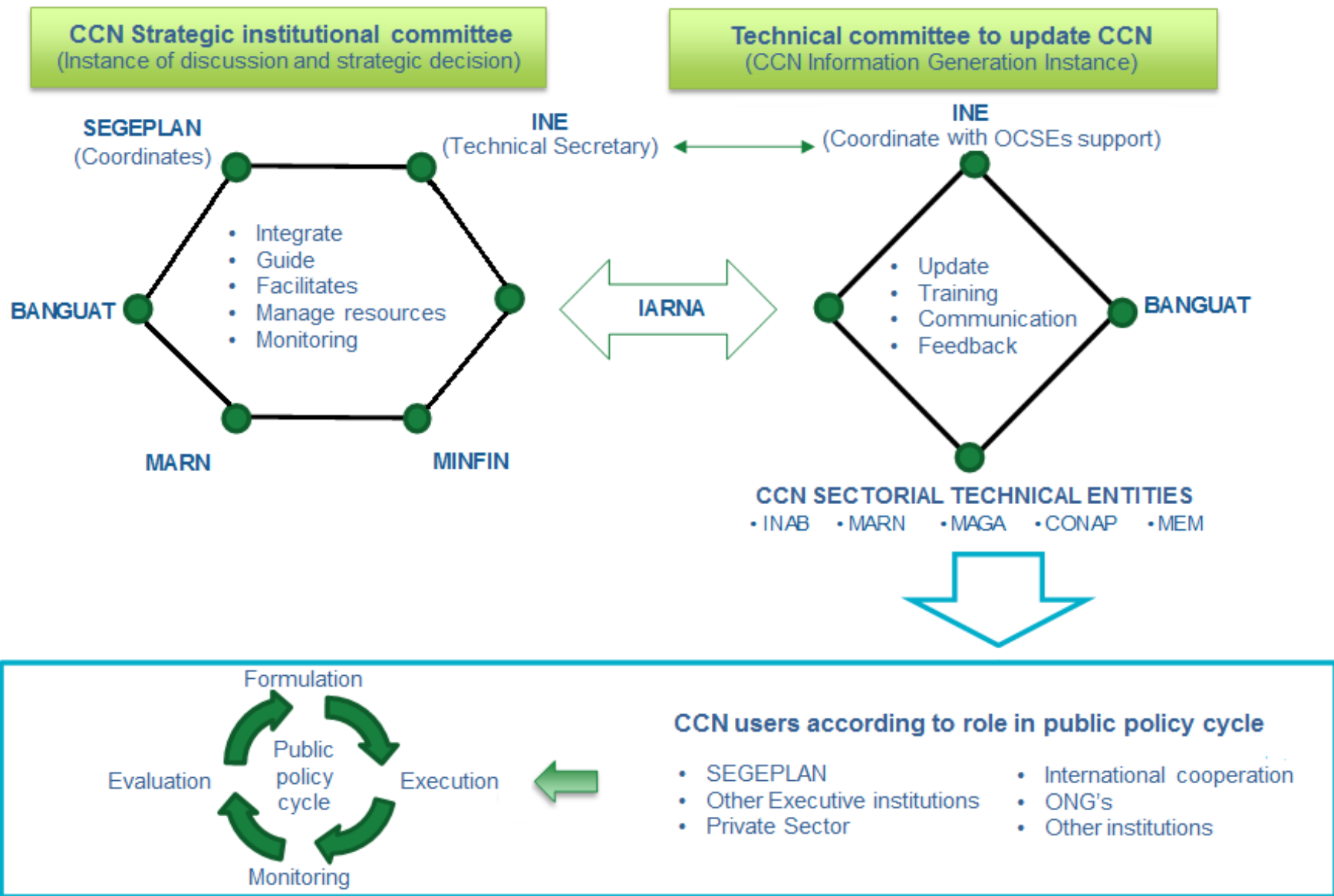


# How accounts were used?

## The case of the forest sector



# The way forward: Ground the process in the institutions without losing the public-academic partnership



---

---

## The way forward: The links to policymaking in Guatemala

- Compilation of environmental-economics accounts provides of relevant information for public policies to Guatemala.
  - National Plan of Development and General Government Policy 2016-2020:
    - Food security
    - Climate change
  - Environmental-economics indicators for public policy cycle analysis and implementation, including SDGs.
  - Scenario modelling for better decision making.



# Thank You

## For your attention

SCAE-Guatemala, disponible en:



<http://unstats.un.org/unsd/envaccounting/ceea/archive/srchResultsCty.asp?ccode=320>  
(Documentos de resultados)

<http://www.infoiarna.org.gt/>  
(Documentos conceptuales,  
Resultados, xls, aplicaciones)