

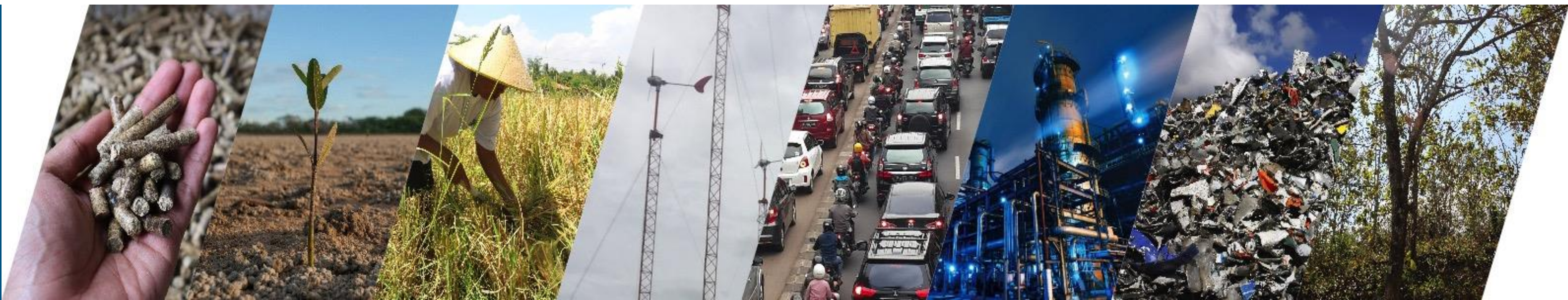


Wealth Accounting and the Valuation of Ecosystem Services (WAVES) 3rd FORUM ON NATURAL CAPITAL ACCOUNTING FOR BETTER POLICY

Peluncuran Produk Hasil Kegiatan WAVES 2019

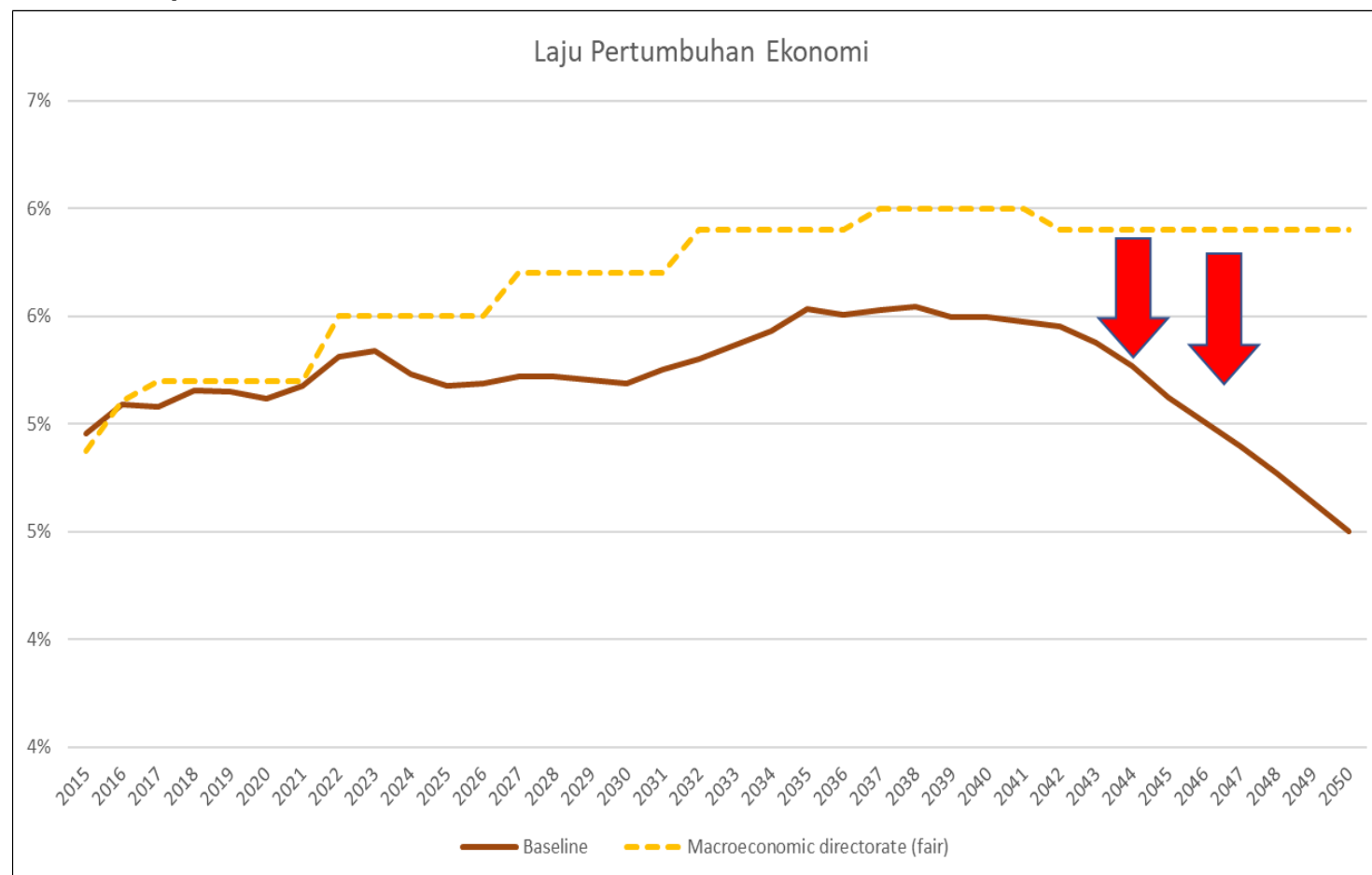
Deputi Menteri Bidang Kemaritiman dan Sumber Daya Alam
Kemen PPN/Bappenas

Jakarta, 26 Juli 2019

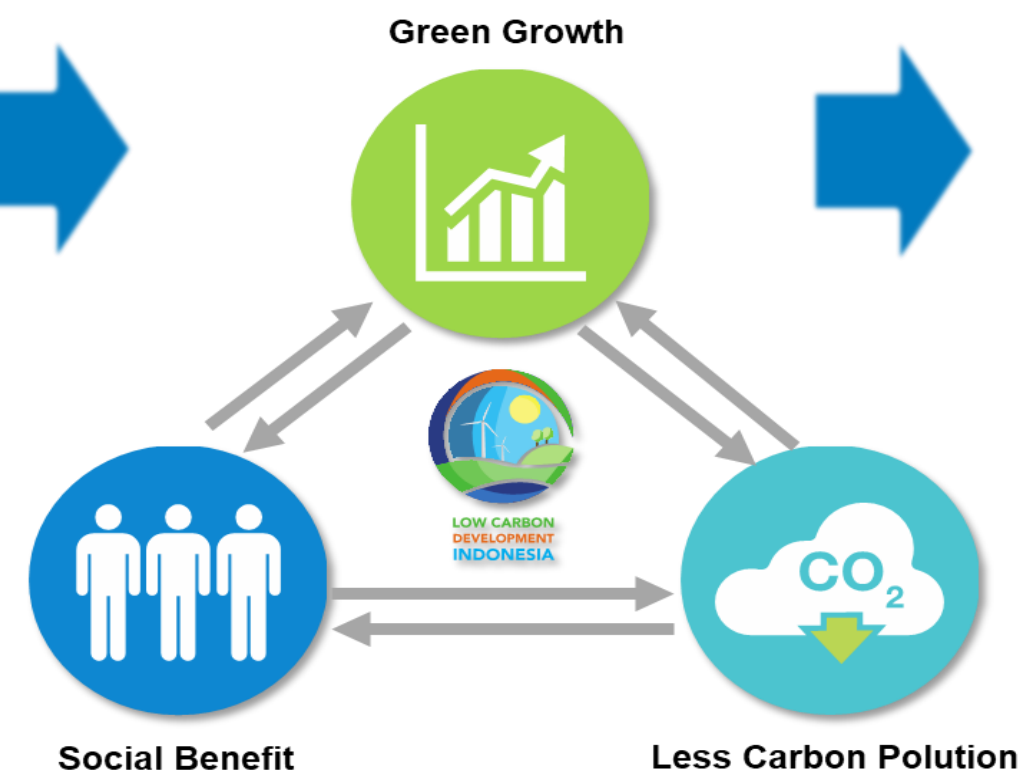


Pembangunan Rendah Karbon

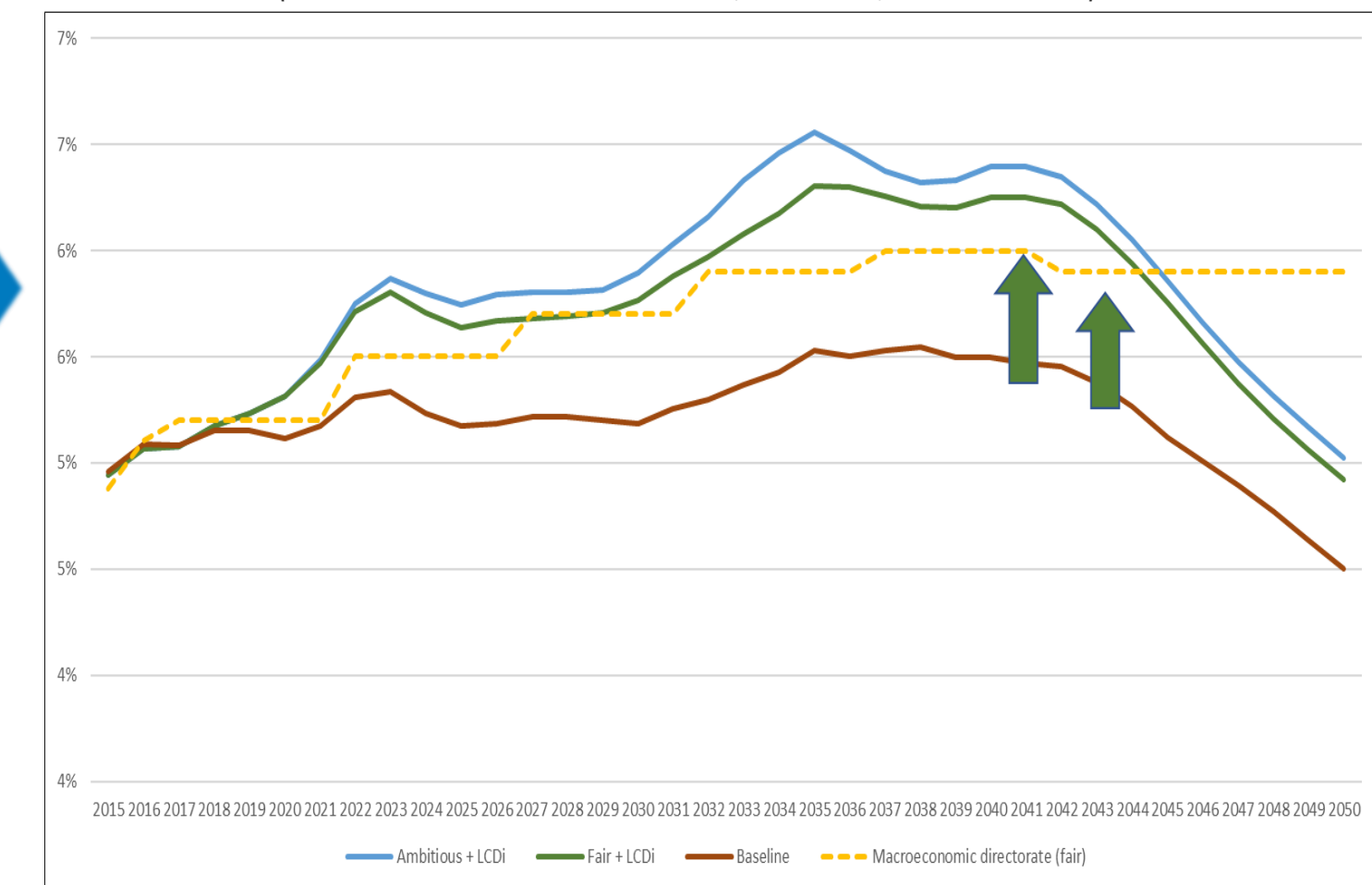
Comparison Scenario of GDP Growth and Baseline Natural Resources Limitation



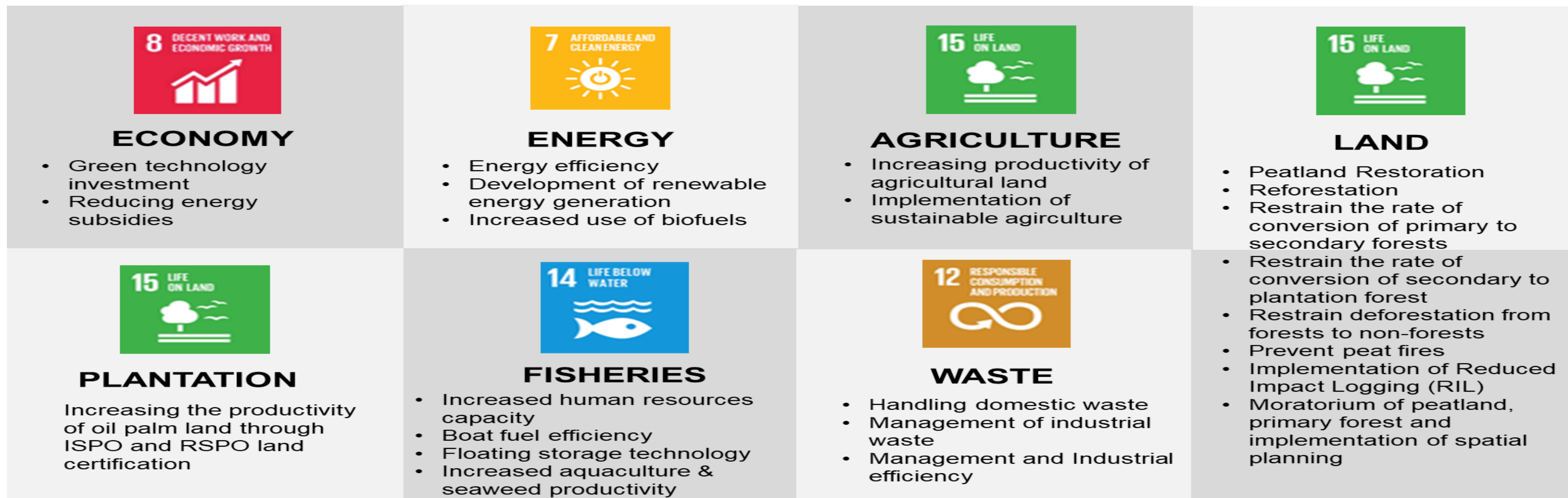
Pendekatan PRK



Comparison Scenario of GDP Growth
(Baseline Natural Resources Limitation, Fair+ LCDi, Ambitious +LCDi)



Konsep dan kebijakan PRK akan diintegrasikan ke dalam RPJMN 2020-2024

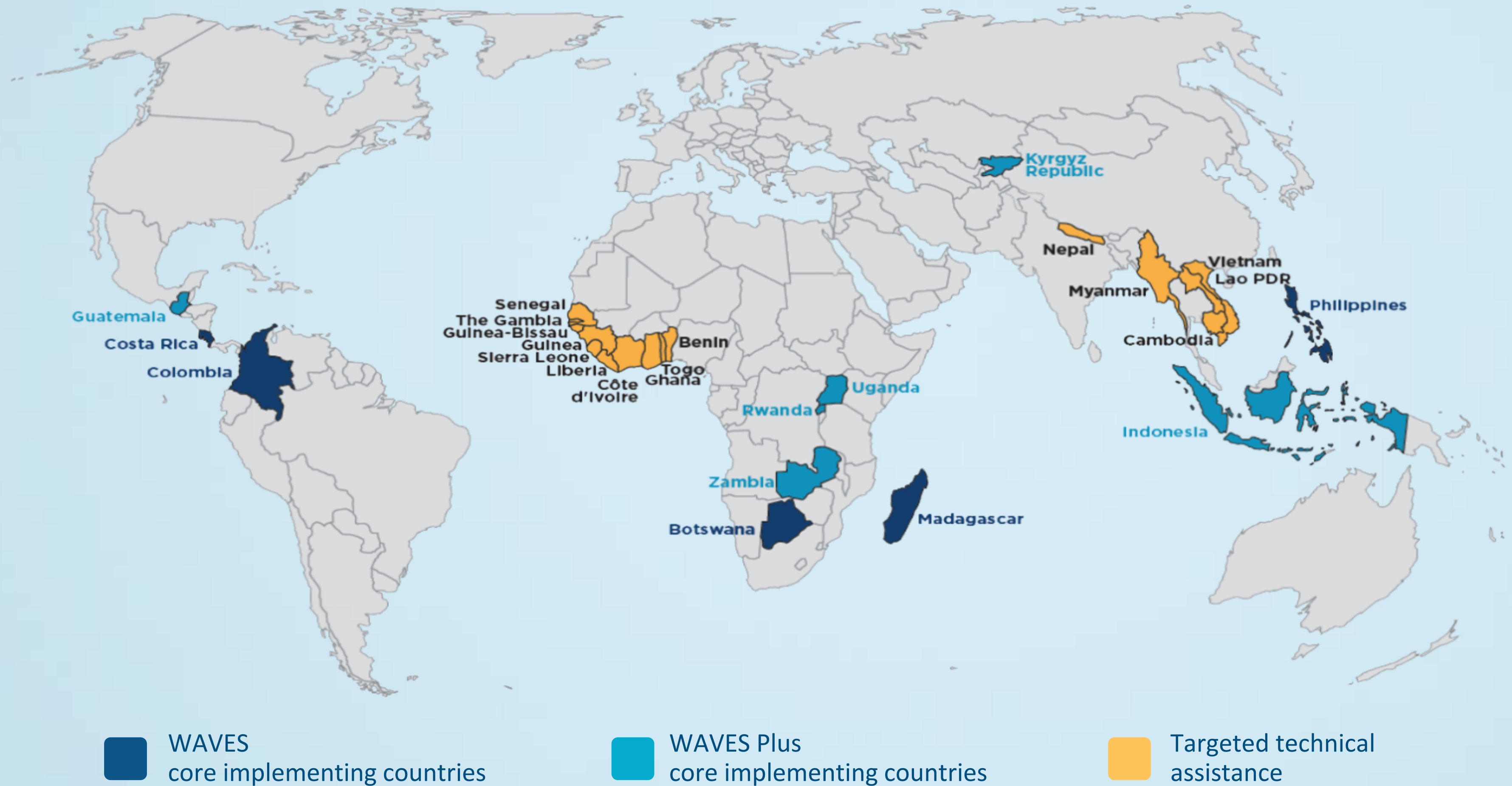


Hasil yang diharapkan :

- Pertumbuhan ekonomi terjaga
- Emisi GRK menurun sesuai komitmen
- Deplesi SDA dan daya tampung lingkungan hidup dapat dikurangi

Overview WAVES Program

Wealth Accounting and the Valuation of Ecosystem Services (WAVES)



Global partnership promoting sustainable development by making sure that natural resources are mainstreamed in the development planning and national economic accounts

www.wavespartnership.org

Natural capital accounting helps Gol meet its targets



NCA laid the foundation to support the government in achieving SDGs targets



to reduce greenhouse gas (GHG) emissions by **29%** by 2030 relative to business as usual, and to a higher target of up to 41%



70% ISPO certified from the production target of 42 million tons in 2020



30% mixture of biodiesel (palm oil) for vehicle fuel by 2025



Grand Design Prevention of Forest Fires, Gardens and Land

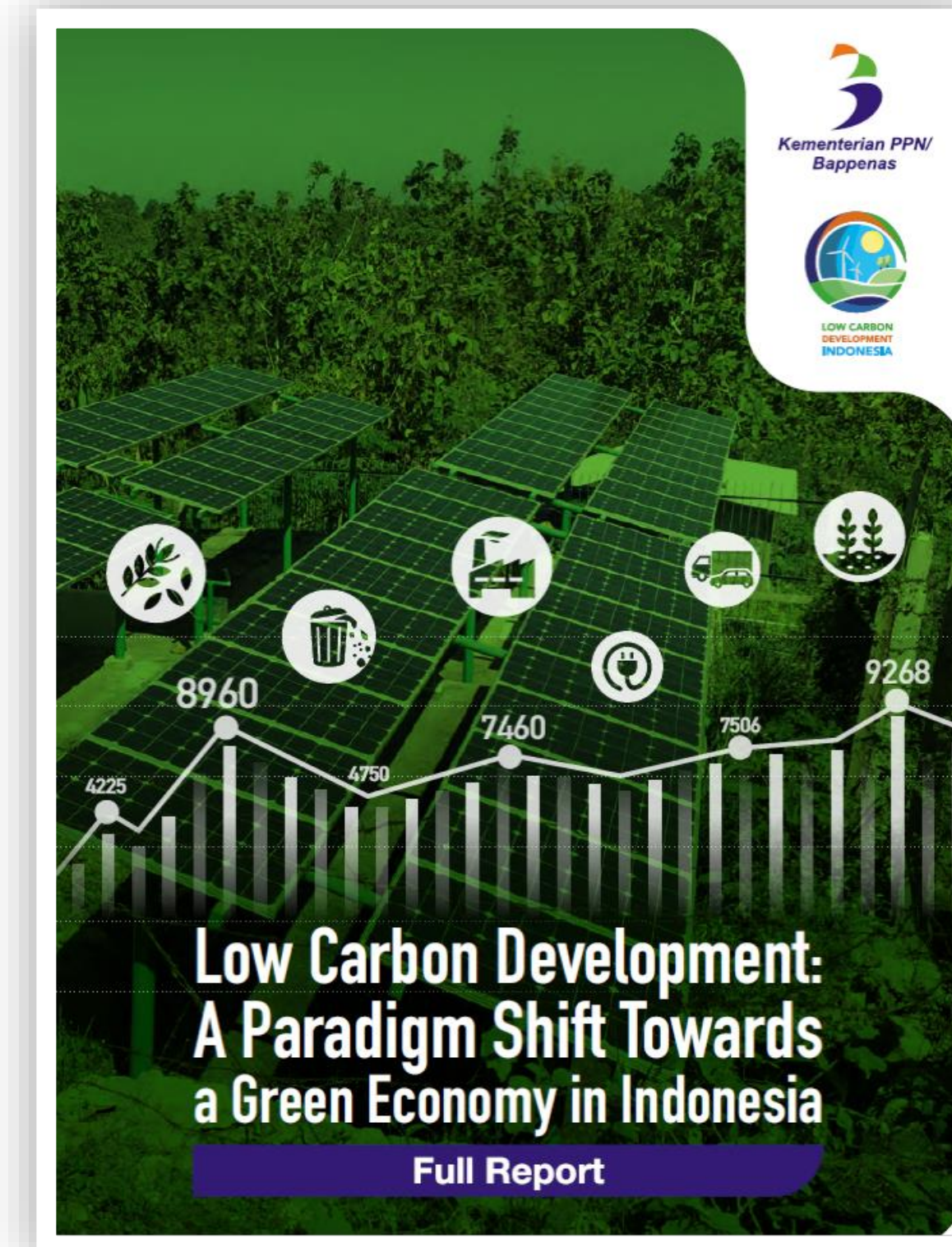


12.7 million ha of land for social forestry



12.7 million ha of land for social forestry

.....and support implementation of plans

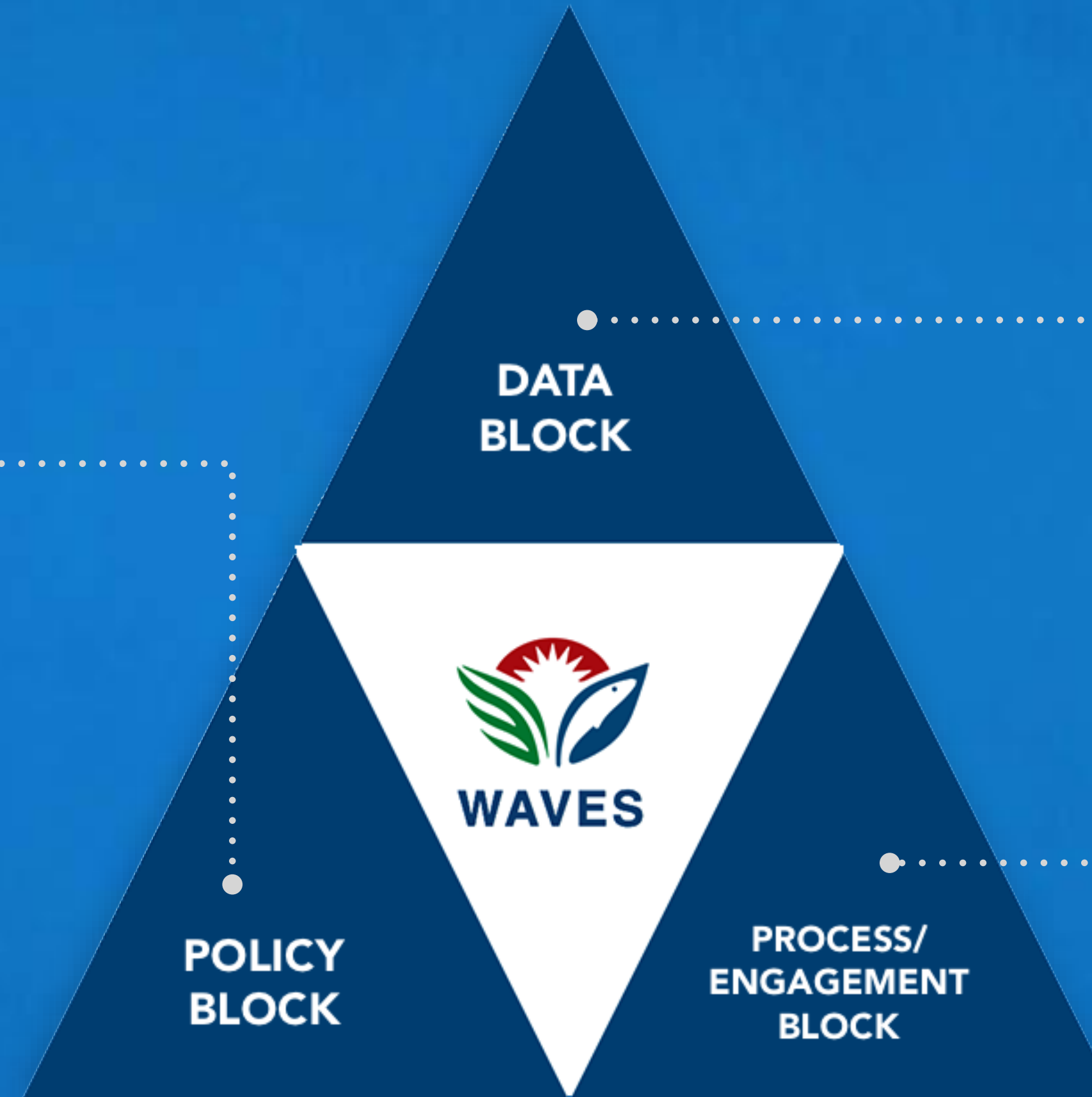


WAVES Program In Indonesia

Three blocks of activities:

To guarantee proper insertion of natural capital concepts in the policy dialogue of the country

- Informing natural capital conceptual approach in the System Dynamics models, specifically in the IV2045 mode, BAPPENAS Environmental Directorate
- Developing data protocol to govern official data exchange mechanism among data custodian and key agencies to support SEEA based policy analysis
- Integration of macroeconomic indicators in policy frameworks



To provide support on data management and account compilation.

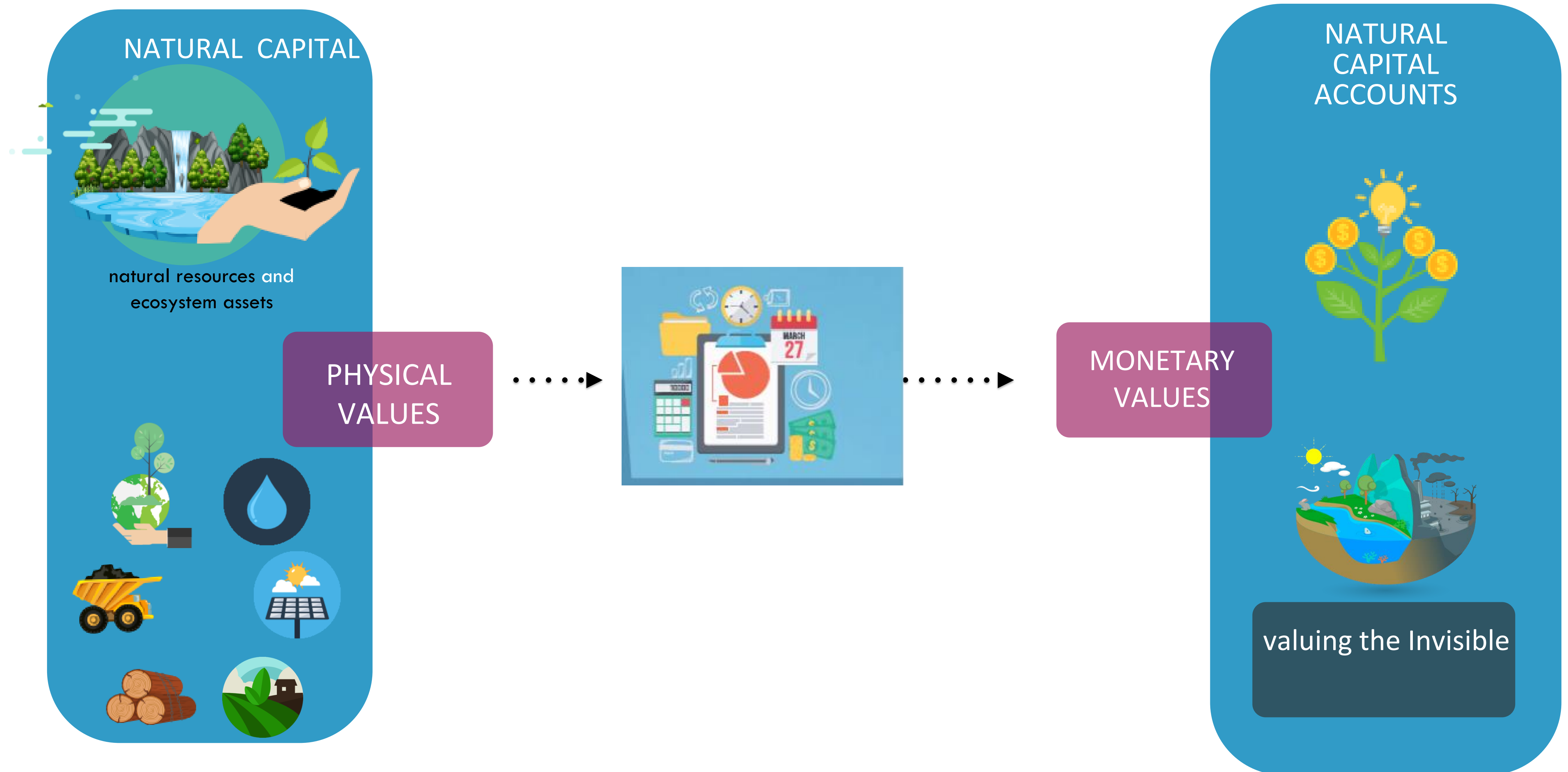
- Macro environmental-economic indicators
- Measure and patterns of land cover and land use
- Introduction of water in the macroeconomic context at watershed level
- Relevance of measuring ecosystem services and assets in peatlands

Further enhancement and expansion of the existing natural capital accounts built under the SISNERLING umbrella.

- SISNERLING assessment and recommendations for integration of standard approaches
- Long term roadmap for SISNERLING implementation

This block serves as a **catalyzer** for the whole WAVES program. The aim will be to implement a strong communication and engagement strategy .

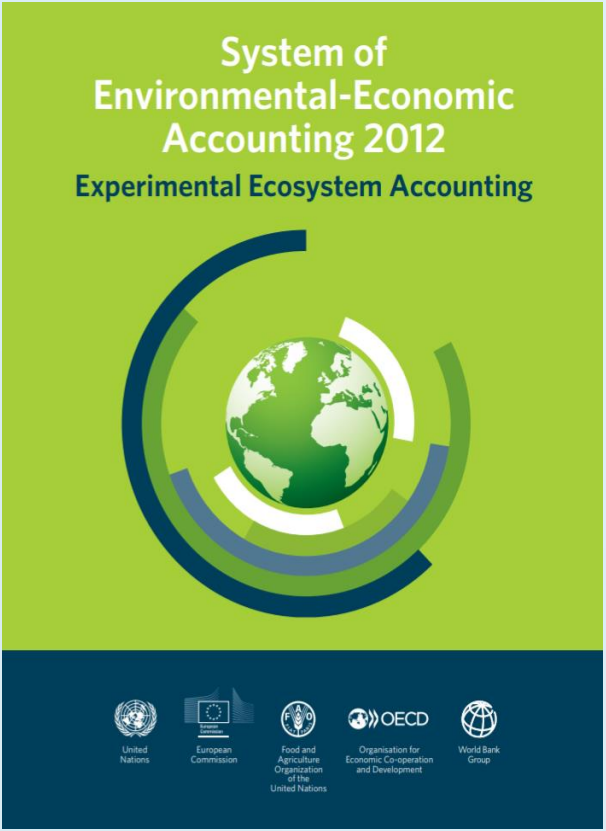
Concept of Natural Capital Accounting



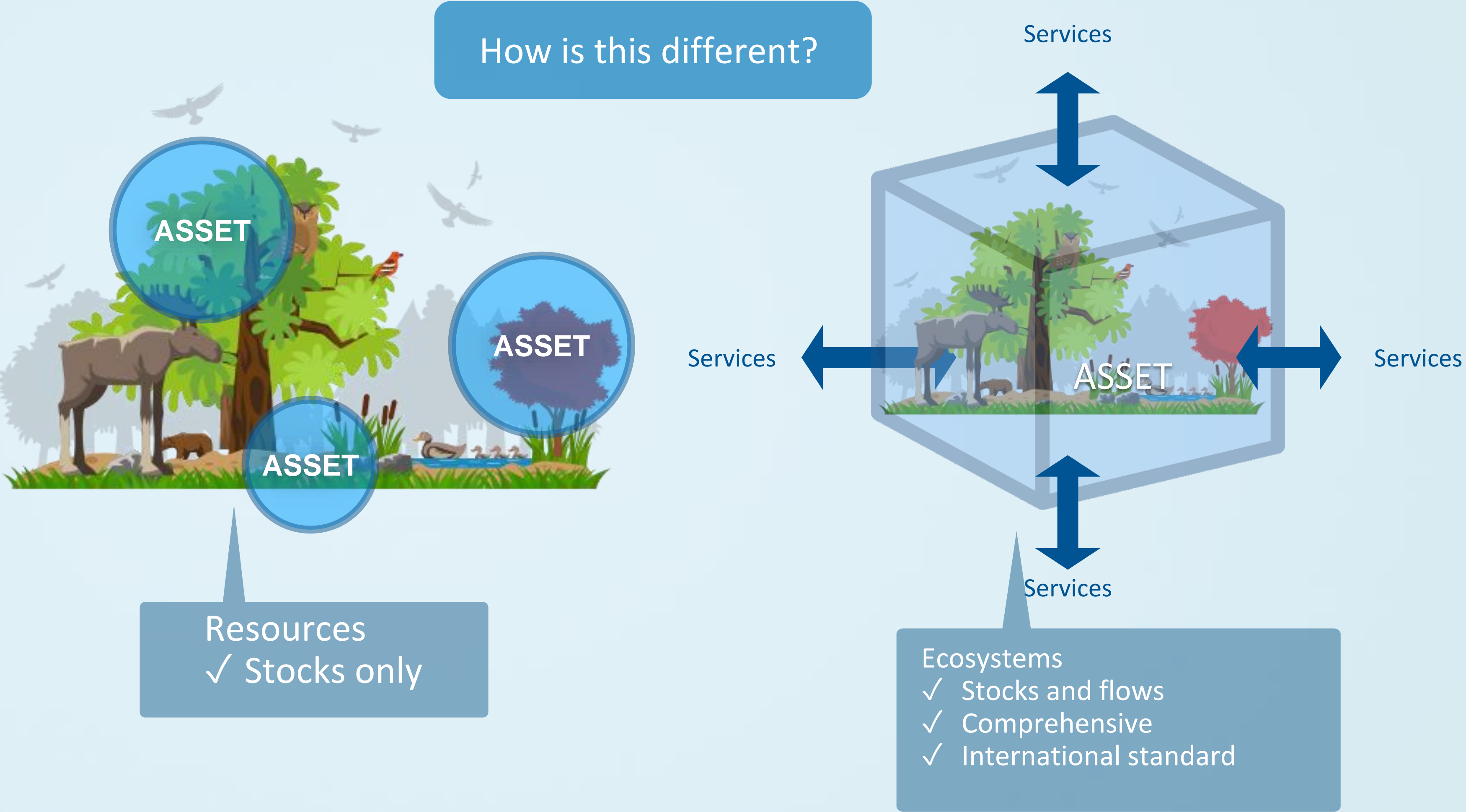
SEEA: International standard for NCA

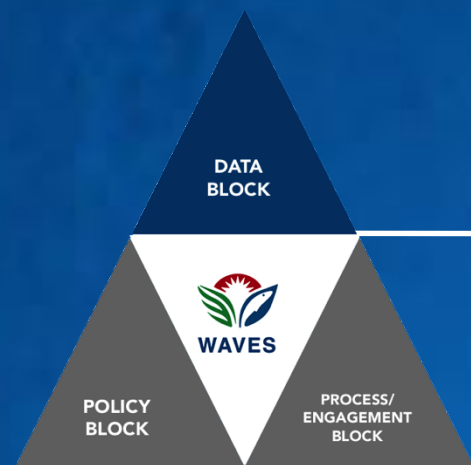


SISNERLING
Source: BPS



SEEA
Source: [UNSD](#),
[Eigenraam et al \(2012\)](#)





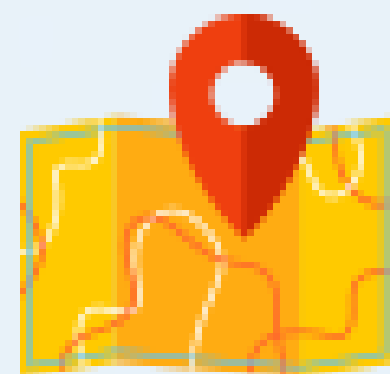
One step closer to science based policy making

Production of policy relevant high quality data and accounts



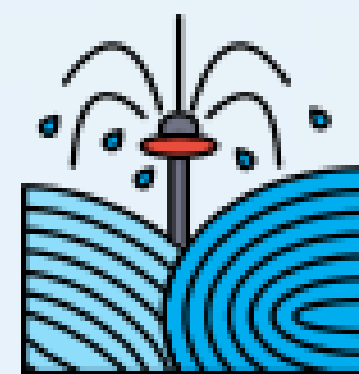
Land Cover Accounts

- ✓ Drafts published by BPS
- ✓ Time trend 1990-2015 per 5 years
- ✓ Forests, scrubs, plantations, shrubs, swamps – 22 classes
- ✓ All of Indonesia



Land Extent Accounts

- ✓ Snapshot 2017, 2015
- ✓ Beyond land cover maps extent in Ha (spatially explicit) of – perennial crops – acacia, oil palm, rubber, coffee, banana, eucalyptus, forests, water
- ✓ Sumatra and Kalimantan



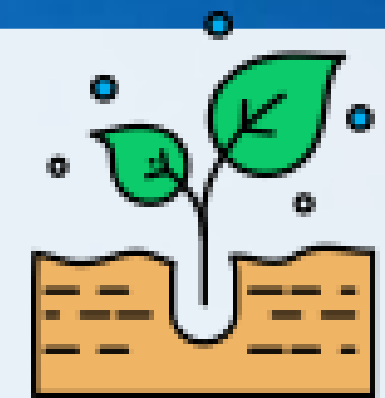
Water account

- ✓ 2014, 2016 SEEA standard using SWAT model
- ✓ Water supply and Water use
- ✓ Citarum Watershed



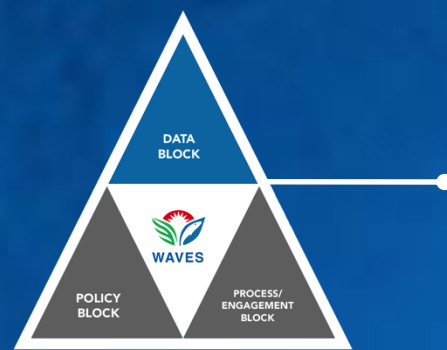
Wealth account

- ✓ 1995-2014
- ✓ Links to macroeconomic framework
- ✓ Natural capital – cropland, energy, forests and protected areas, metals, pasture land
- ✓ Feeds into wealth (human+produced+natural) capital
- ✓ All of Indonesia



Peat Accounts

- ✓ Time period cover: 1990-2015
- ✓ Cover, extent and Ecosystem Services monetized for– Forest products – timber and biomass, biodiversity, carbon sequestration, commodities – plantation and paddy
- ✓ Sumatra and Kalimantan



Helps deliver some powerful messages :
mismatch between reported and actual land use

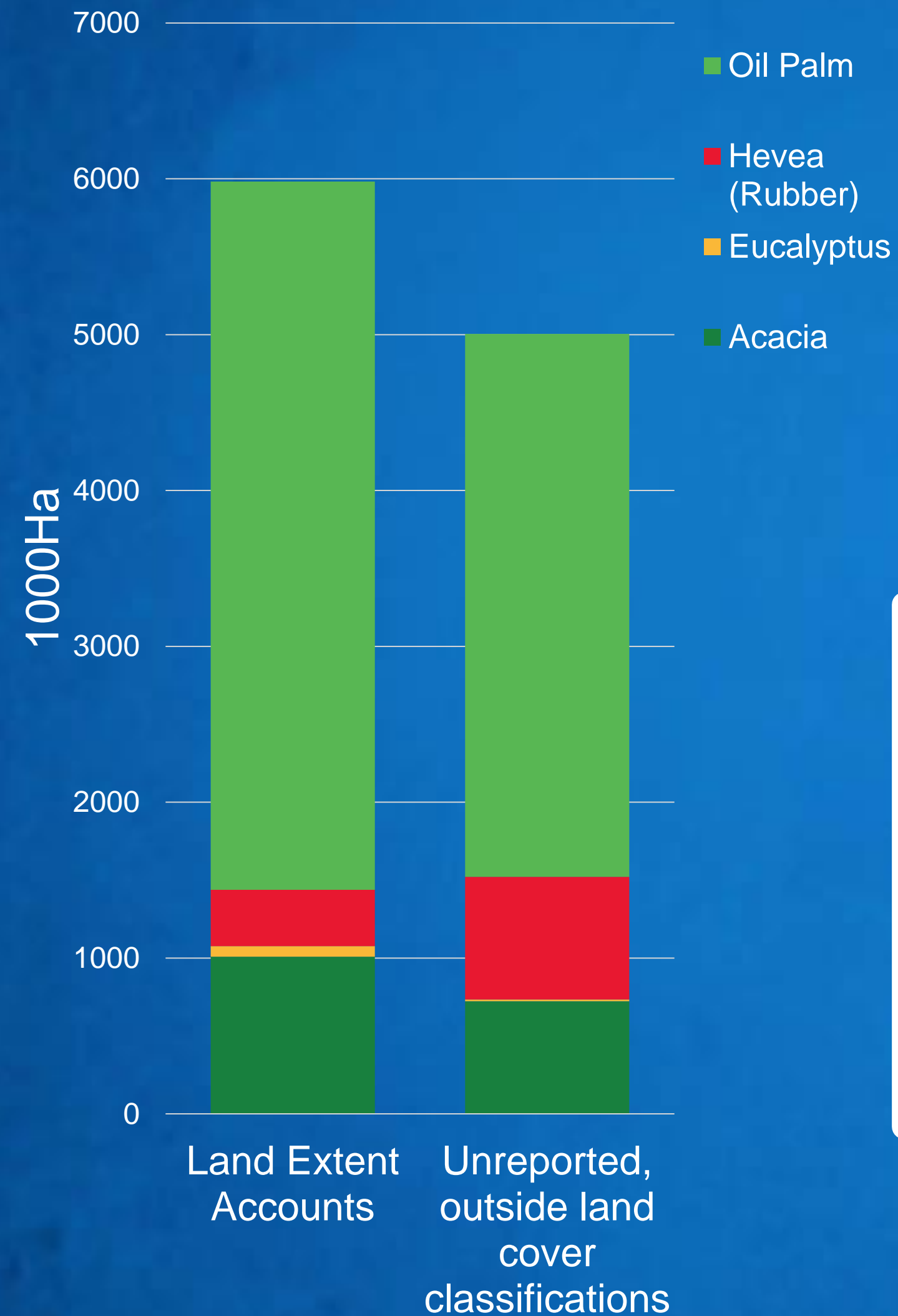
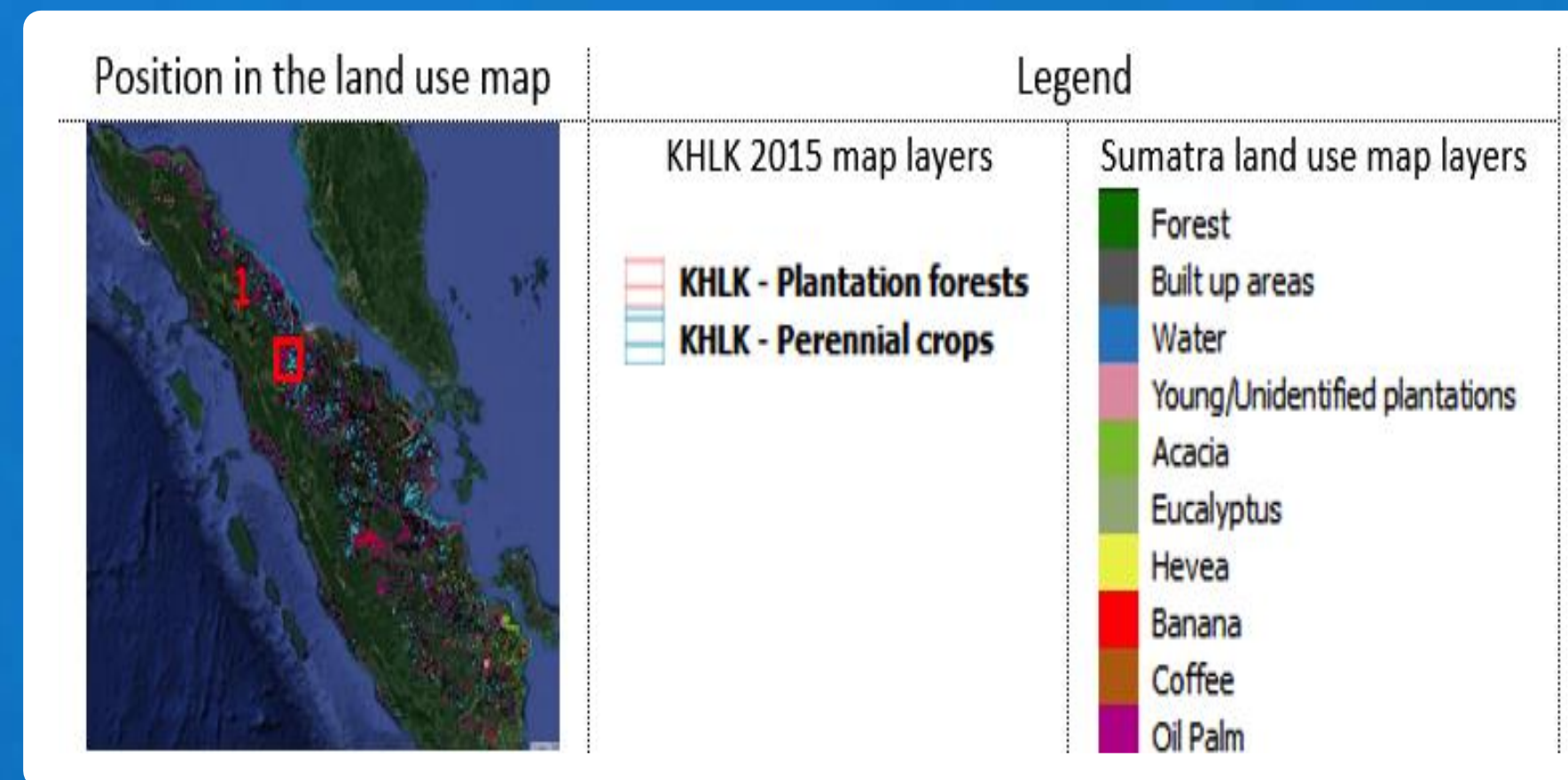
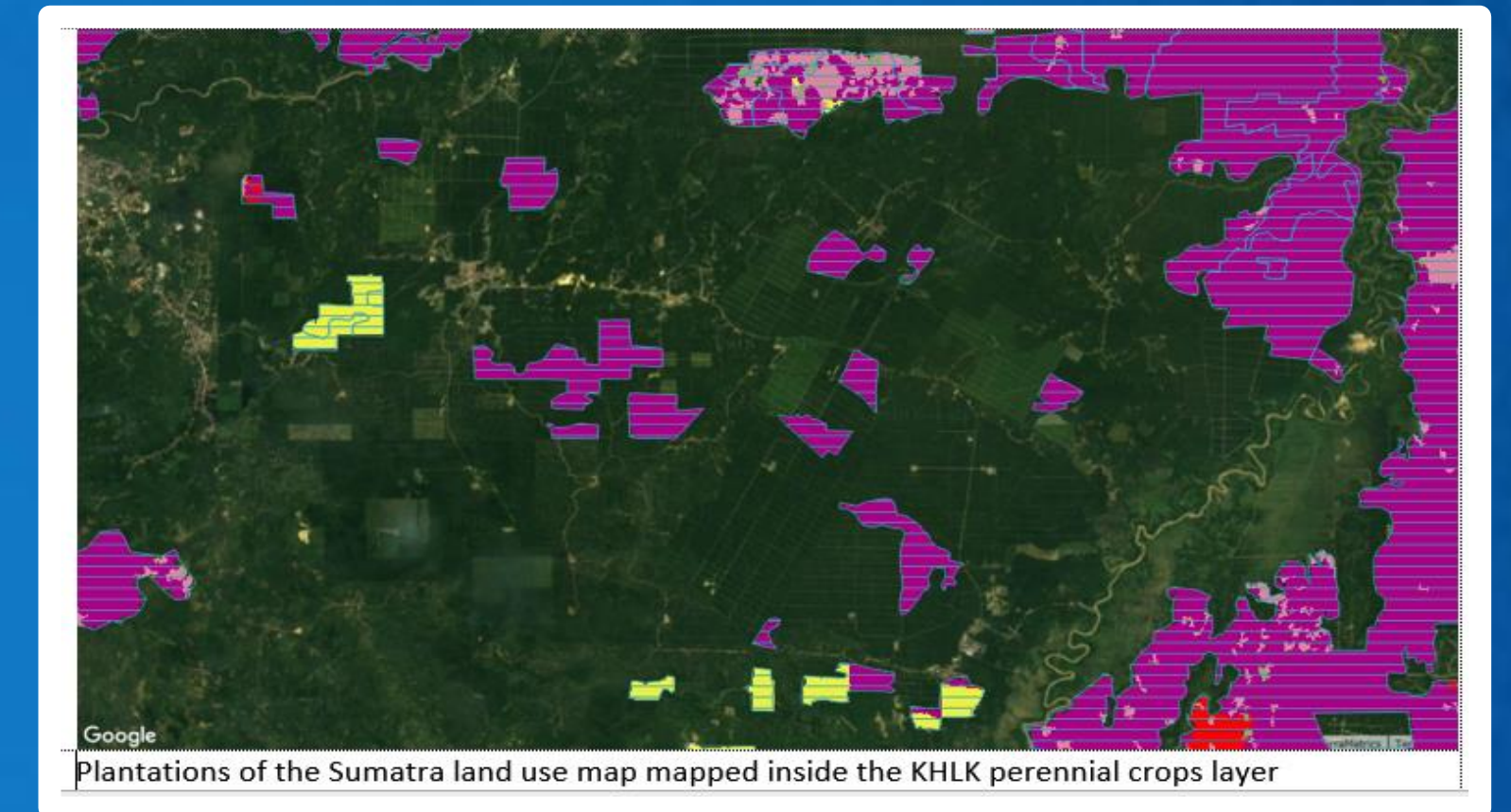


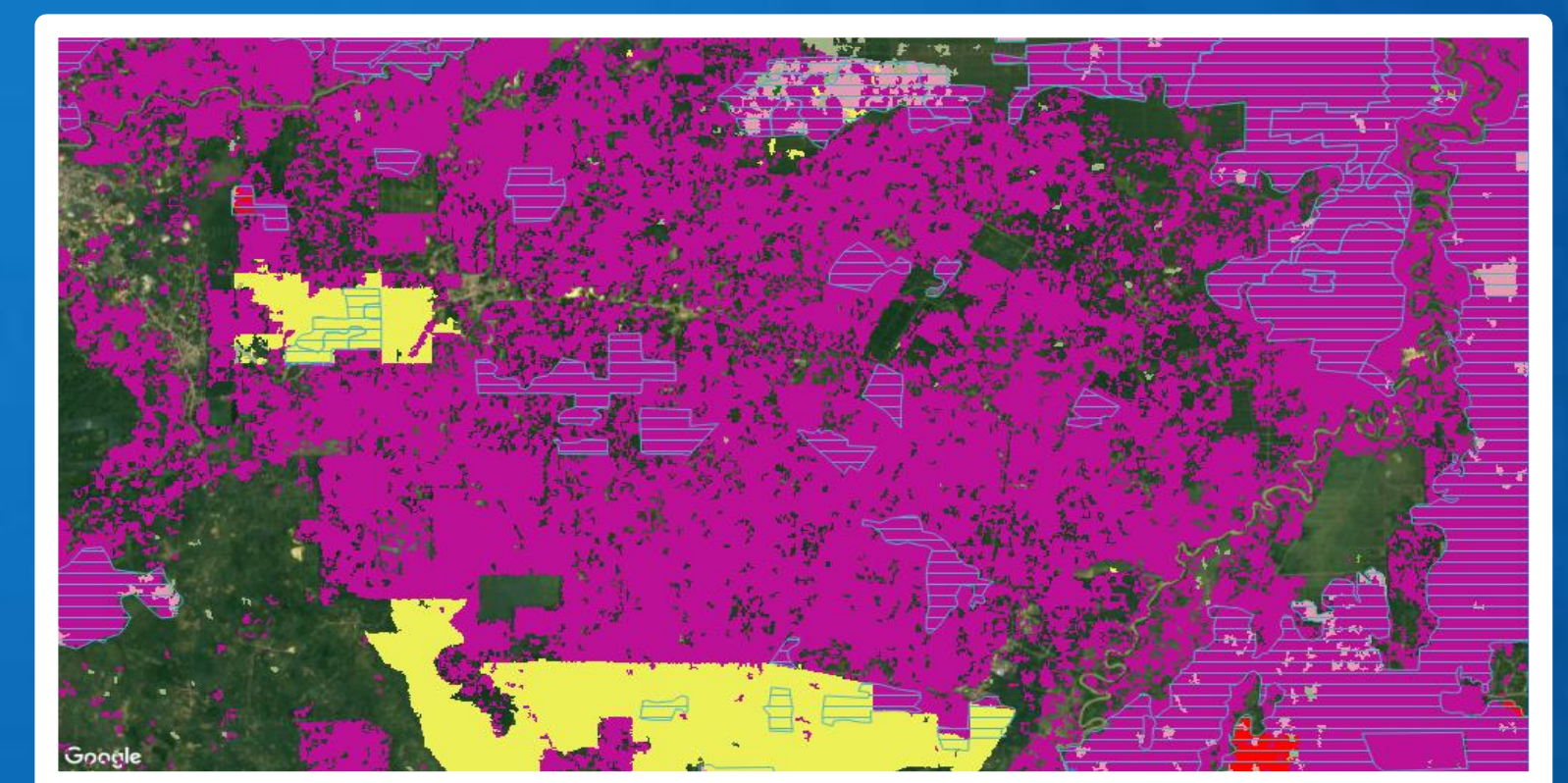
Exhibit A: *Land conversion not fully reflected in official data, as Oil Palm cover underestimated by ~43% in Sumatra*

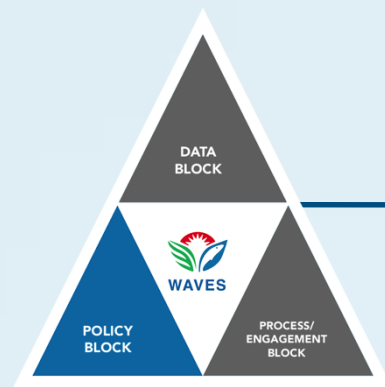


Reported KLHK Concession Area

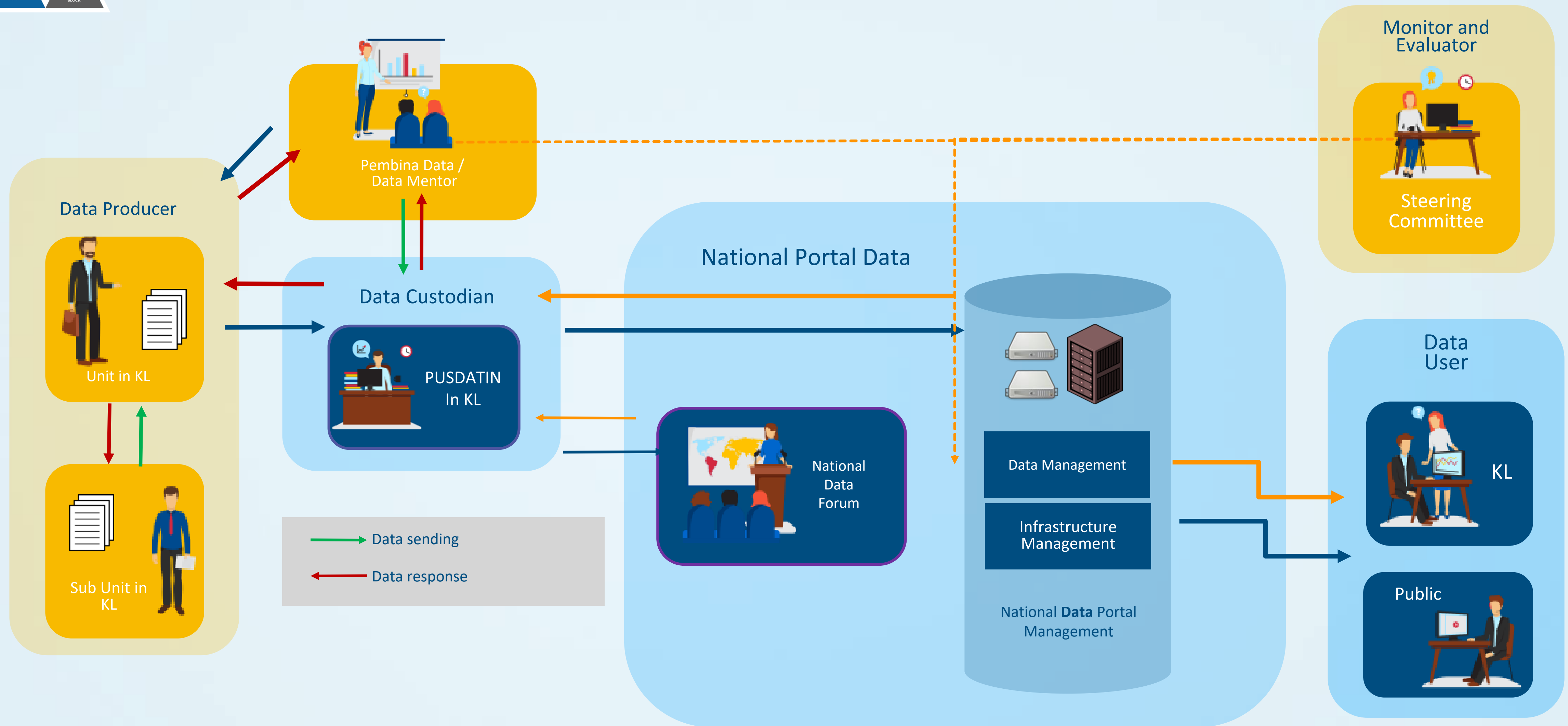


Geospatially Verified Ecosystem Accounts





Improved access and availability of high quality data to policy makers



WAVES engagement



REPUBLIK INDONESIA
KEMENTERIAN PERENCANAAN PEMBANGUNAN NASIONAL/
BADAN PERENCANAAN PEMBANGUNAN NASIONAL

KEPUTUSAN DEPUTI BIDANG KEMARITIMAN DAN SUMBER DAYA ALAM
NOMOR KEP. 53 /D.3/06/2017
TENTANG
PEMBENTUKAN TIM KOORDINASI PENGEMBANGAN SISTEM TERINTEGRASI
NERACA LINGKUNGAN DAN EKONOMI

DEPUTI BIDANG KEMARITIMAN DAN SUMBER DAYA ALAM,

Menimbang : a. bahwa dalam rangka mengarus-utamakan prinsip ekonomi hijau dan pembangunan berkelanjutan ke dalam Rencana Pembangunan Jangka Menengah Nasional 2015-2019 serta menguatkan proses pengambilan kebijakan berdasarkan suatu sistem neraca lingkungan yang terintegrasi dengan neraca ekonomi, akan dilakukan pengembangan Sistem Neraca Terintegrasi Lingkungan dan Ekonomi (Sisnerlins);

The Deputy Minister of Maritime and Natural Resource of Bappenas Decree Number KEP.53/DEP.3/10/2017 on on the establishment of the Coordinating Team for the Development of the System for Integrated Environmental and Economic Accounting



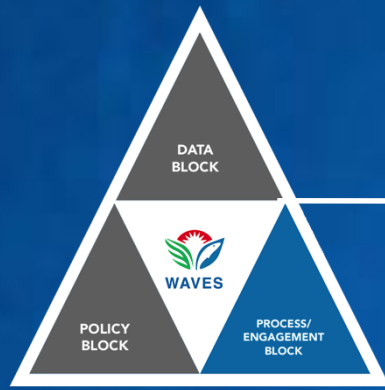
Steering Committee



Technical Committee



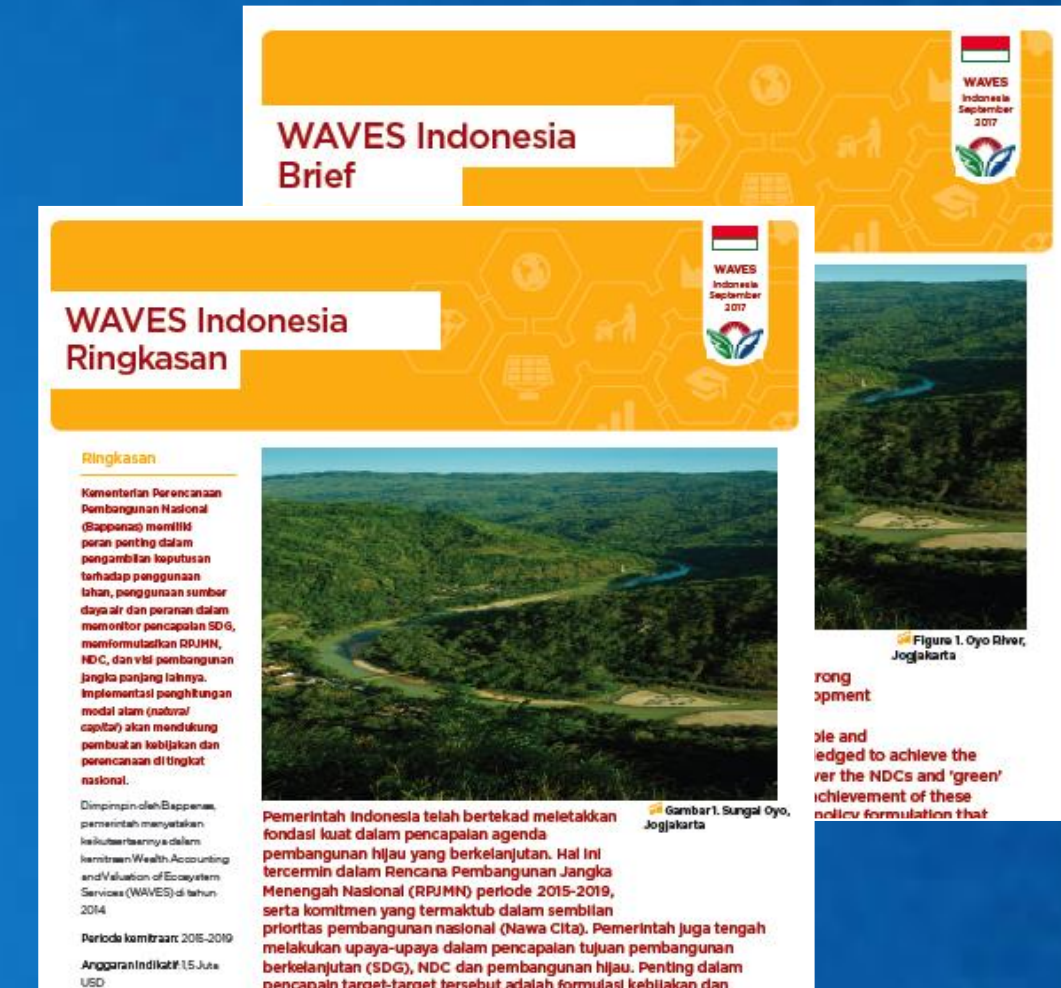
1. Law No. 32/2009 on Environmental Protection and Management (UUPPLH 32/2009)
2. Law No. 26/2006 on Spatial Planning (UUPR 26/2007)
3. PP46/2017



Inspiring knowledge exchanges, successful batch of trained specialists , first natural capital knowledge and policy database published

WAVES Indonesia Brief (in English and Bahasa)

Indonesia Country Report



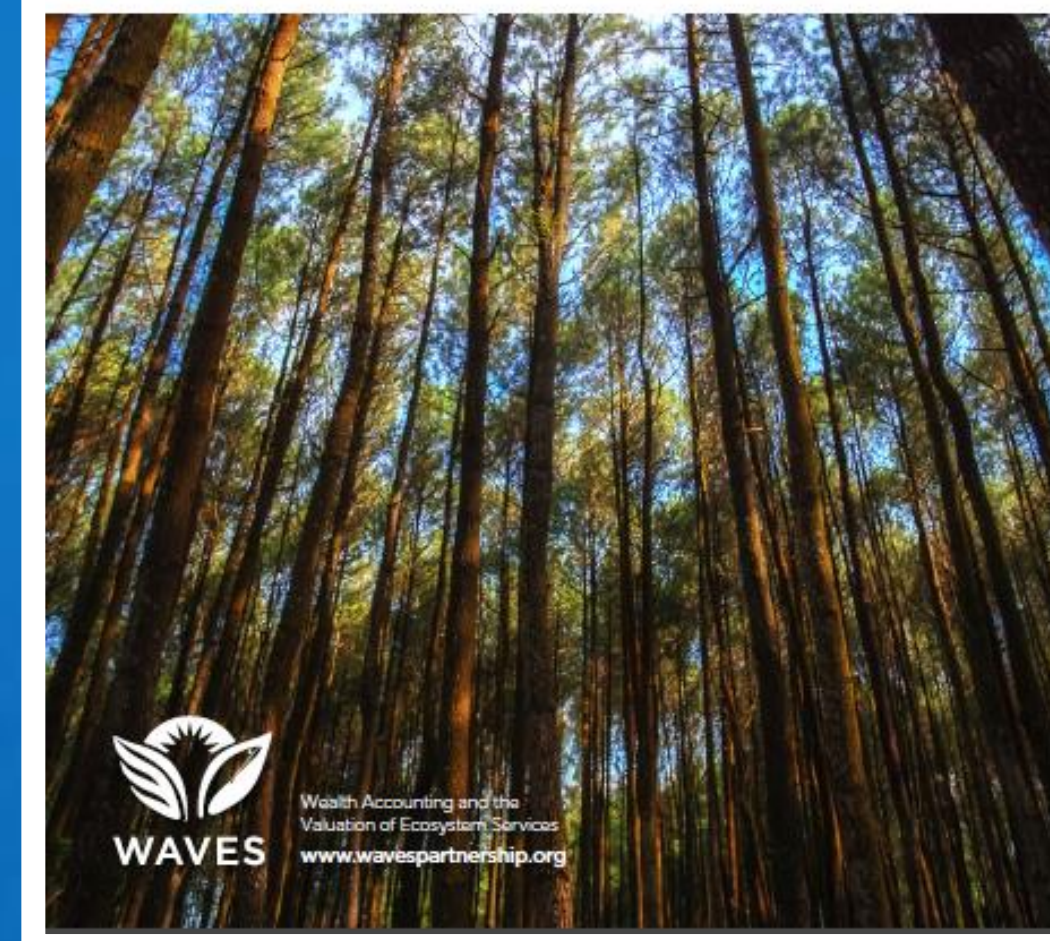
Articles on Website

www.wavespartnership.org

7th WAVES Annual Meeting in Rwanda



Discussion on Fiscal Potential Report



Natural Capital Policy Forum 26-27 November 2018



Way Forward:

Systematic development of NCA has helped strengthen institutional foundations and processes to deliver across national and regional initiatives and mandates



Law No. 25/2004 on
National Development
Planning System



Law No. 26/2006 on
Spatial Planning



Law No. 32/2009 on
Environmental Protection and
Management



Government Regulation No. 46/2017 on
Environmental Economic Instruments for Environmental
Management .



Several regional government regulations that require data to feed into natural accounting exercises for assessing carrying capacity, cost benefit analysis, spatial planning and environmental management. Example:

Bandung's regulation PERDA 23/2013

Gorontalo's regulation 4/2016

Padang's regional regulation 8/2015

West Kalimantan's provincial regulation 3/2014

West Java's regulation.

Terima Kasih