



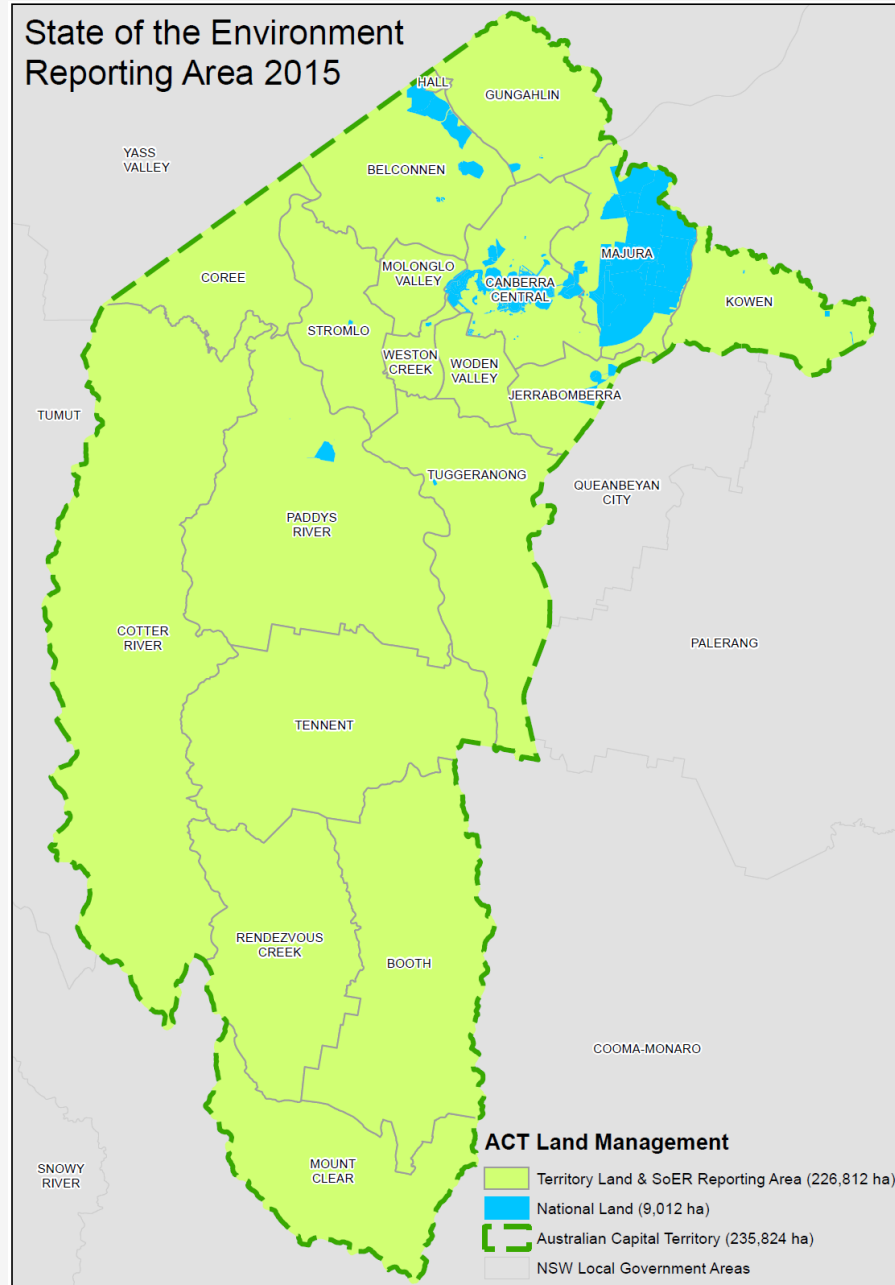
COMMISSIONER FOR SUSTAINABILITY
AND THE ENVIRONMENT



<http://www.envcomm.act.gov.au/>



State of the Environment Reporting Area 2015



<http://www.envcomm.act.gov.au/>



Canberra's ecological footprint

- The average ecological footprint of Canberrans was **8.9 global hectares per person** (gha/person)
- The total ecological footprint of all ACT residents is approximately 3,300,000 global hectares, **nearly 14 times** the geographical area of the ACT.





<http://www.envcomm.act.gov.au/>





<http://www.envcomm.act.gov.au/>

Process and workplan

- 2016 / 17 Establish OCSE / ANU steering committee and working group
- Expert workshop(s) – ensuring process is rigorous and all elements are critically reflected upon
- Design & implement communications strategy
- Iterative process of designing and populating accounts for:
 - Waste
 - Air
 - Land
 - Ecosystems
 - Water
 - Environmental Expenditure
 - Energy
- Revise account structure and update data following exposure draft comments – 2018
- Finalise accounts and prepare SoE report based on the accounts for submission to government - 2019

